

INSTRUCTIONS

1. Find and/or subsequent record used to evaluate the corner position.
2. Location of evidence found, note discrepancies in the record, state method of establishing lost or obliterated corner.
3. Description of monument and accessories set to perpetuate the corner position.
4. Sketch of corner, show all pertinent data which can best be shown in a sketch example, corner marking, topography ties, position of accessories, etc.
5. Certification must be signed and sealed by Land Surveyor registered in the State of Montana.
6. Fill in Cross Index & Section Diagram at bottom of sheet.

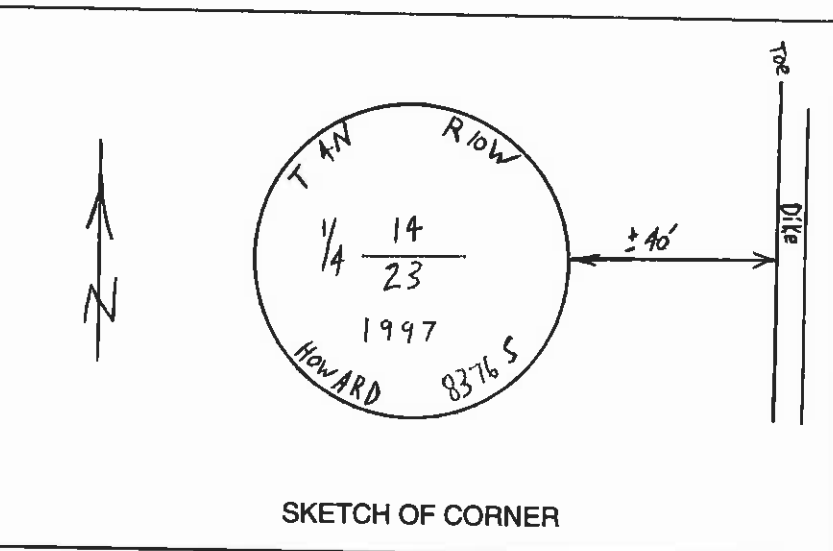
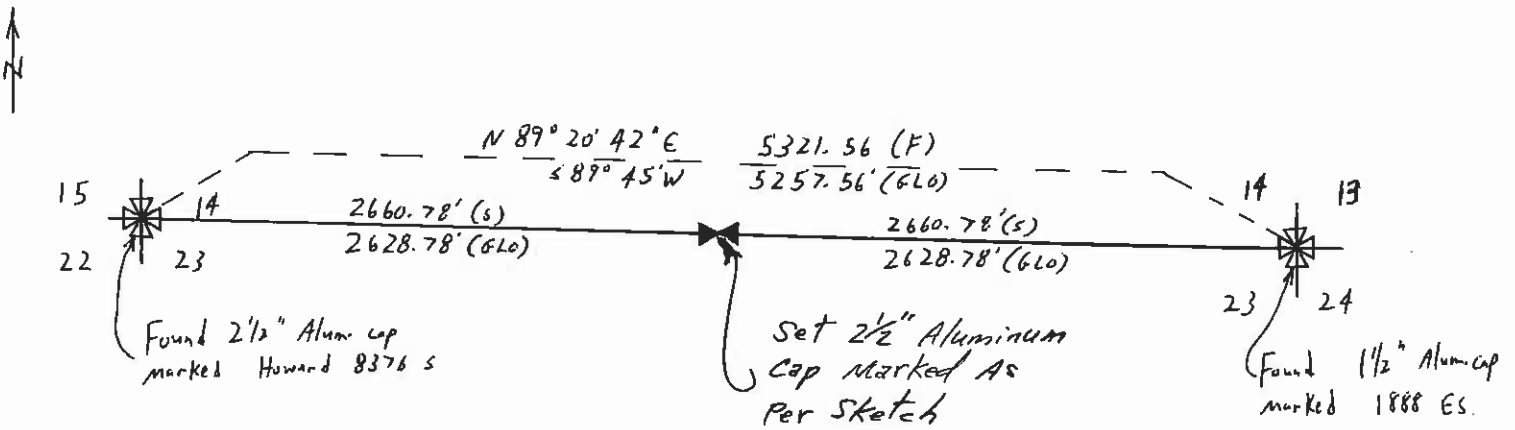
CERTIFIED CORNER RECORDATION

Corner: 1/4 Section Corner 14 & 23 T. 4N R. 10W P.M.M. Deer Lodge County

ORIGINAL RECORD (1869): Set a post in a mound of earth with pits, charred stake as per instructions.

EVIDENCE FOUND: None.

PERPETUATION: This corner is positioned at single proportion measurement between the Northwest and Northeast section corners, section 23. I set a 5/8" x 24" rebar with a 2 1/2" aluminum cap marked as shown in the sketch. I placed a MARLS tag on a fence post beside the aluminum cap.



SKETCH OF CORNER

CERTIFICATION

I, Brad Sturdevant
 certify the information shown herein is true and correct.
Brad Sturdevant
 Signature Ground Party Chief

I, Glenn R. Howard
 certify that this Corner Record correctly represents work performed by me or under my direction in compliance with the "Corner Recordation Act" (70-22-101, et seq., M.C.A.)
Glenn R. Howard
 Signature of Surveyor & Seal

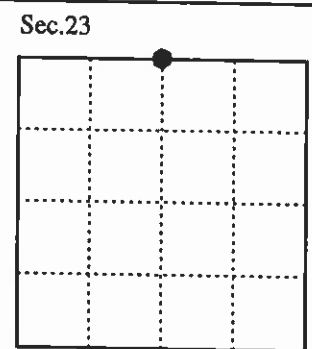
Date: 8-19-97 Reg. No. 8376 S

Employer: Druyvestein Johnson & Associates

Office of Clerk and Recorder, County of Deer Lodge. This "corner record" was filed for record on August 21, 1997 was noted on the cross index plat and is assigned page No. 1444, in book No. 2

Barbara J. Vaughn, DEPUTY
 County Official

Cross Index No. N-19 T. 4N R. 10W PMM



•- corner this sheet