

CERTIFIED CORNER RECORDATION

Corner: NE Sec. 16 , T.2N., R58E., P.M.M., Carter County

Resurvey Record: In 1944, set an iron post, 3 ft. long, 2 in. in diameter, 36 in. in the ground, with brass cap marked:

T 2 N R 58 E

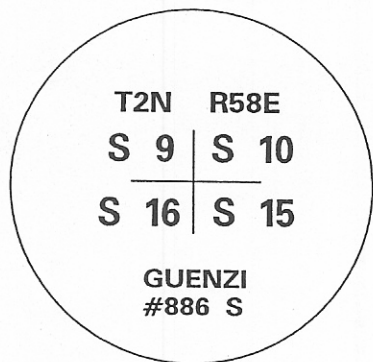
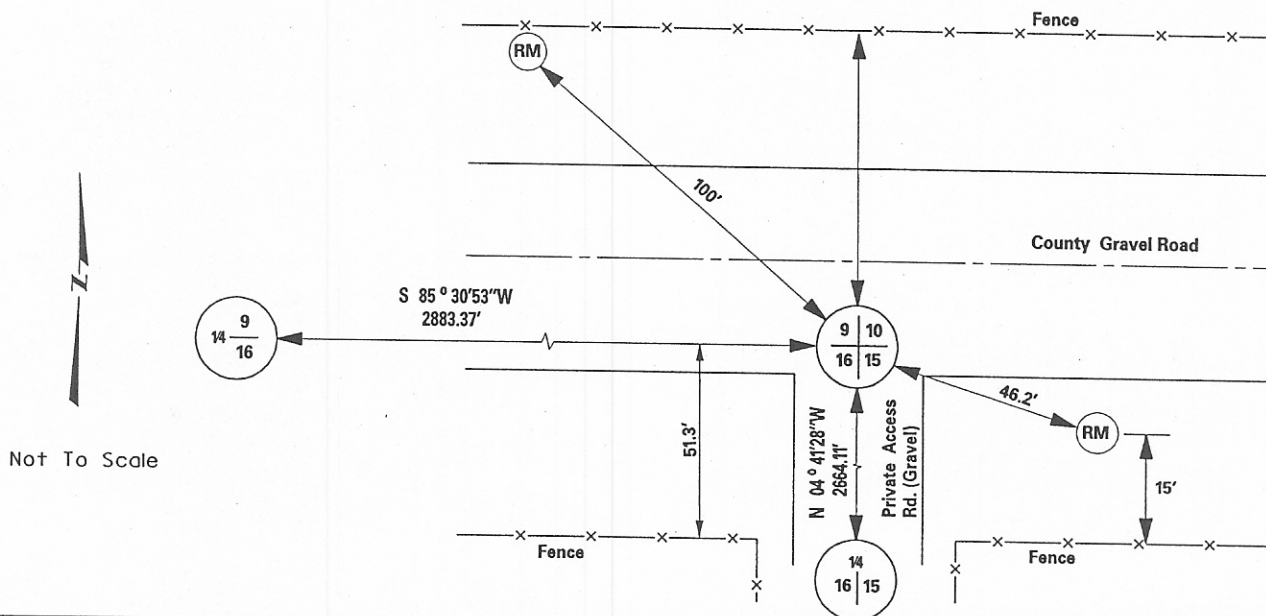
S9	S10
S16	S15

from which an iron post, 3 ft. long, 1 in. in diam., set 30 ins in the ground for a reference monument, bearing S. 45° E., 70 lks. dist., with brass cap marked T 2 N R 58 E s 15 RM 1944 and an arrow pointing to the corner. An iron post, 3 ft. long, 1 in. in diam., set 30 ins. in the ground for a reference monument, bears N. 45° W., 70 lks. dist., with brass cap marked T 2 N R 58 E s 9 RM 1944 and an arrow pointing to the corner. Fences border the roads extending S., E., W.

Found: In 1982 Guenzi Surveys found monument as described above along with 2 reference monuments, 46.2' to the NW and SE.

Found: In 2004, MDT Survey Crew 41-86 found brass cap stamped 1944 as shown below, buried 0.5 ft below the road surface running N. and S. We also found a GLO brass cap RM to the southeast at 46.2' and is in grass 15 ft. N. of E.-W. fence. The RM to the northwest was never found and is in the county gravel road. The section corner cap is just N. of an E-W culvert crossing in the N-S. road.

Set: In 2005 MDT Survey Crew 41-86 set a 2" A.C. Reference monument 100' NW of corner with an MDT survey witness post alongside of it. We also set an MDT survey witness post at the found RM to the southeast.



SKETCH OF CORNER

CERTIFICATION

I, Steve Grove certify the information shown herein is true and correct.

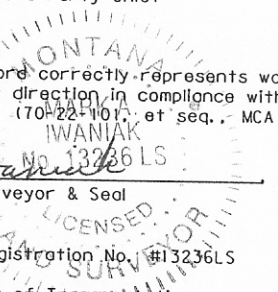
Steve Grove
Signature of Ground Party Chief

I, Mark A. Iwaniak, certify that this Corner Record correctly represents work performed by me or under my direction in compliance with the "Corner Recordation Act" (70-22-101, et seq., MCA)

Mark A. Iwaniak
Signature of Surveyor & Seal

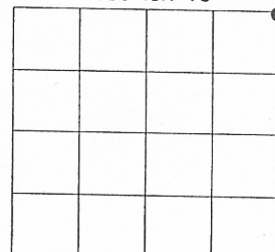
Date: 5-9-05 Registration No. #13236LS

Employer: Montana Department of Transportation



Office of Clerk and Recorder, CARTER COUNTY Recorded 05/09/2005 At 10:00 AM, record" was filed for Pamela J. Castleberry, Clk & Rcdr By *Virginia Sudwick* on cross-index plat, or Return to: COUNTY CORNER RECORDS

Section 16



● = Corner this sheet

171563

County Official

Cross Index No. J-13, T. 2N., R.58E., P.M.M.