

INSTRUCTIONS

1. Use for or subsequent record used to evaluate the corner position.
2. Description of evidence found, note discrepancies in the record, state method of establishing lost or obliterated corners.
3. Description of monument and accessories set to perpetuate the corner position.
4. Sketch of corner, show all pertinent data which can best be shown in a sketch example, corner marking, topography ties, position of accessories, etc.
5. Certification must be signed and sealed by Land Surveyor registered in the State of Montana.
6. Fill in Cross Index & Section Diagram at bottom of sheet.

162716

CERTIFIED CORNER RECORDATION

Corner North Quarter Cor. Sec 32 T. 2 N., R. 58 E. P.M.M. Carter County

ORIGINAL RECORD: Surveyed by George Scheets in 1889.

Set a sandstone 20 x 10 x 6 ins. 15 ins in the ground for 1/4 Sec. Cor. marked 1/4 on the north face, dug pits 18 x 18 x 12 ins E & W of stone 5 1/2 ft. dist. and raised a mound of earth 1 1/2 ft high, 3 1/2 ft base alongside.

SUBSEQUENT RECORD: Surveyed by W.R. Bandy, Ernest Parker in 1944.

at the intersection of long established property lines, verified by reference to the town plat of Ekalaka. Set an iron post, 3 ft. long, 1 in. in diam., 30 ins. in the ground, with brass cap marked:

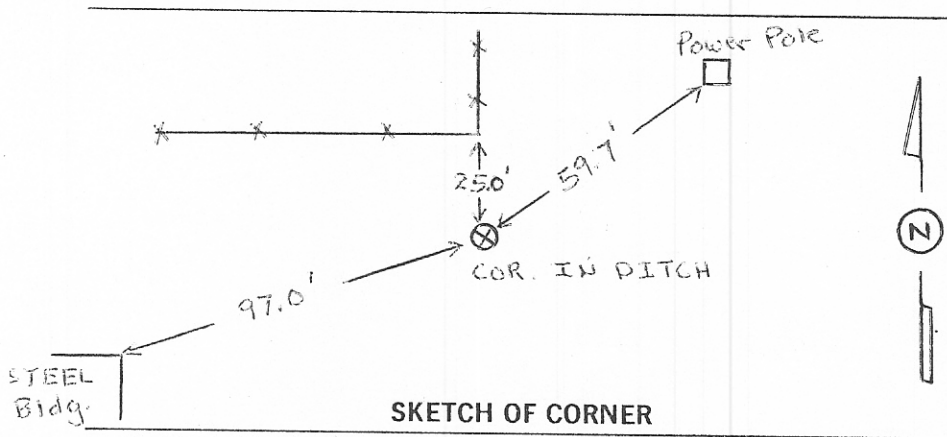
S29
1/4-----
S32
1944

Dug pits 18x18x12 ins. E & W of cor. 3 ft dist.

FOUND : 1" iron pipe with top broken off.

SET : Replaced the 1" iron pipe with a 2 1/4" x 30" aluminum pipe buried 30" in the ground with 3/4" aluminum cap marked as indicated. Placed the 1" iron pipe inside the aluminum pipe.

S29
1/4-----
S32
1990 7155LS



SKETCH OF CORNER

CERTIFICATION

I, Quinn Wright
certify the information shown herein is true and correct.

Quinn Wright
Signature of Ground Partner Chief

I, Jimmie L. Brumman
certify that this Corner Record correctly represents work performed by me or under my direction in accordance with the "Corner Recordation Act" (M.C.A. 70-2-101, et seq., M.C.A.)

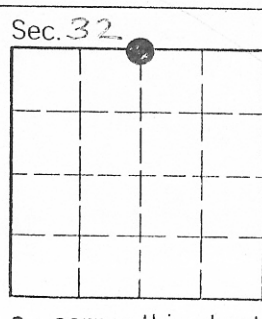
Jimmie L. Brumman
Signature of Surveyor

Date: 9-17-90 Rec. No. 155 S

Employer: Prairie States/HKM

Office of Clerk and Recorder, County of Carter. This "corner record" was filed for record on October 9, 1990 was noted on the cross-index plat and is assigned page No. _____, in book No. _____

Pamela J. Castleberry
County Official



Cross Index No. V-7 T. 2N R. 58E PMM

• - corner this sheet

162716