

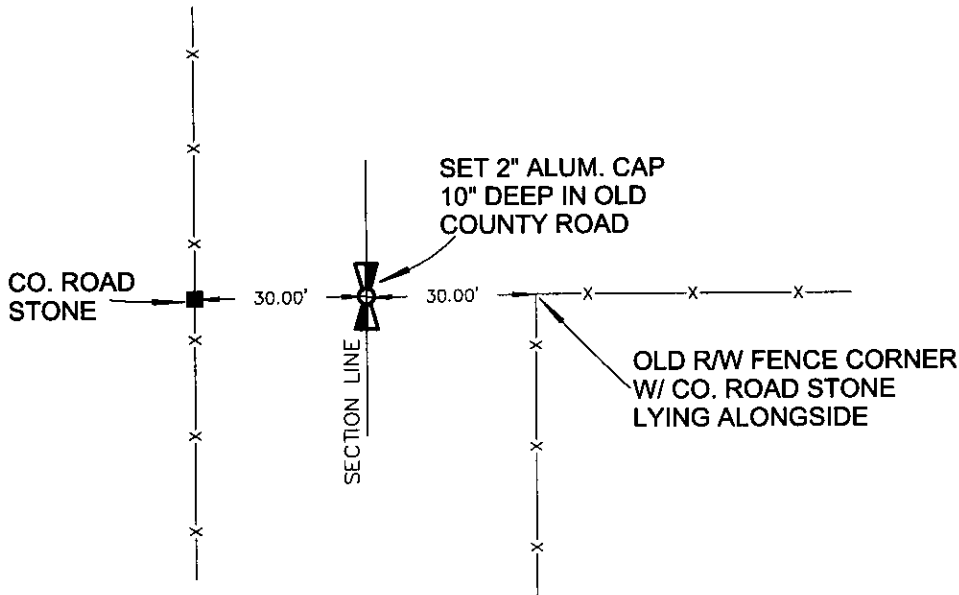
CERTIFIED CORNER RECORDATION

Corner W1/4 SEC. 28 T. 2N. R. 24E. P.M.M. YELLOWSTONE County

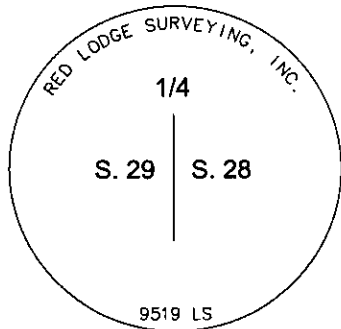
Original: Record per. 1891 GLO by George T. Lamport; Set a sandstone 20x10x4, 15 ins. in the ground for 1-4 Sec. Cor marked 1-4 on W. face, dug pits 18x18x12 ins. N. & S. of stone 5 1-2 ft. distance and raised a mound earth 4 1-2 ft. high, 3 1-2 ft. base alongside.

Evidence: No trace of original stone found. Corner falls in old county road extending N. & S.

Perpetuation: Corner position established per county road stone to the west and old fence corner to the east. Set 2" alum cap 10" deep in centerline of old county road.



See Certificate of Survey Number _____ for further information



SKETCH OF CORNER

CERTIFICATION

I, Brent Nearpass
certify the information shown herein is true and correct.

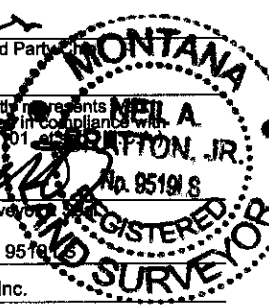
Brent Nearpass
Signature Ground Party

I, Neil A. Bratton, Jr.
certify that this Corner Record correctly represents the corner as shown on the plat
performed by me or under my direction in compliance with
the "Corner Recordation Act" (70-2-201) of the State of Montana.

Neil A. Bratton, Jr.
Signature of Surveyor

Date: 5-4-2005 Reg. No. 9519

Employer: Red Lodge Surveying, Inc.



Office of Clerk and Recorder, County of Yellowstone

This  was
Yellowstone County CR 0.00

3340753

Page: 1 of 1
07/19/2005 02:41P

In book No. _____

County Official

Cross Index No. T-9 T. 2N. R. 24E. PMM

Section 28

● corner this sheet