

INSTRUCTIONS

326274

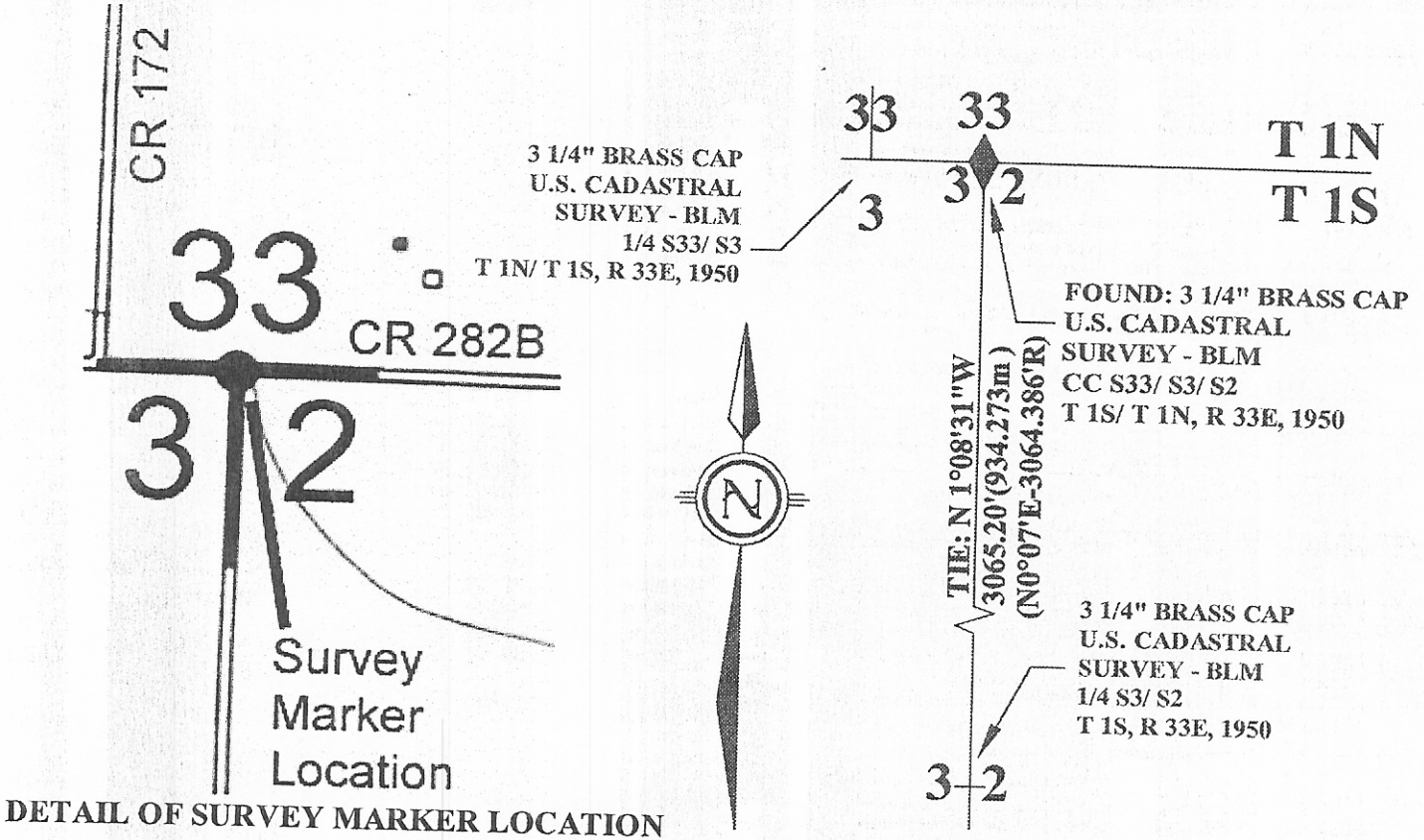
1. Original and/or subsequent record used to evaluate the corner position.
2. Description of evidence found, note discrepancies in the record, state method of establishing lost or obliterated corners.
3. Description of monument and accessories set to perpetuate the corner position.
4. Sketch of corner, show all pertinent data which can best be shown in a sketch example, corner marking, topography ties, position of accessories, etc.
5. Certification must be signed and sealed by Land Surveyor registered in the State of Montana.
6. Fill in Cross Index & Section Diagram at bottom of sheet.

CERTIFIED CORNER RECORDATION

Corner CC S33/ S3/ S2 T. 1S/1N R. 33E P.M.M. Big Horn County

RECORD: AN IRON POST, 28 INCHES LONG, 2 1/2 INCH DIAMETER, SET 34 INCHES IN THE GROUND WITH A BRASS CAP MARKED "CC S33 T1N R33E, S3/S2 T1S R33E 1950".

FOUND: MONUMENT AS DESCRIBED AND SHOWN BELOW.



FND= 0.28' (0.085m) BLM BC / 0.89' (0.27m) BELOW ASP RD CTY RD 282B @ "T" INTER /RM SW FND



CERTIFICATION

I, S. D.
Certify the information shown herein is true and correct.

Signature of Board Party Chief

I, DAWSON
No. 14516 LS
certify that this Corner Record correctly represents work performed by me or under my direction in compliance with the Corner Recordation Act (78-2-201 & Sec. M.C.A.)

Signature of Surveyor & Seal

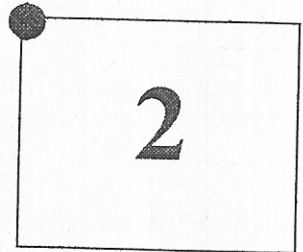
Date: 11-28-01 Reg. No. 14516LS

Employer: WASHINGTON GROUP

Office of Clerk and Recorder, County of _____ This "corner record" was filed for record on JAN 04 2002 was noted on the cross-index plat and is assigned page no. _____ in book no. _____

Lady B. [Signature]
County Official

Cross Index No. A-17 T. 1S R. 33E PMM



• - Corner this sheet

326274