

# CERTIFIED CORNER RECORDATION

CORNER NW COR SEC 35 T. 1 S R. 33 E P.M.M. BIG HORN COUNTY

ORIGINAL RECORD  
GLO 1883

Set a post 4 ft. long 5 ins. sq. with marked stone 12 ins. in the ground for cor. to Sec's., 26, 27, 34, & 35. marked T1S S26 on NE., R33E S35 on SE., S34 on SW., & S27 on NW. faces, with 1 notch on S. & 2 on E. edges, dug pits 18 x 18 x 12 ins. in each sec. 5 1/2 ft. dist. and raised a mound of earth 2 ft. high, 4 1/2 ft. base around post. John T. Blake U.S. Surveyor.

BLM 1950

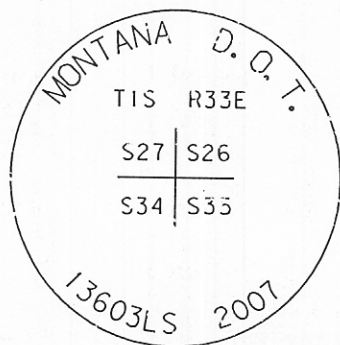
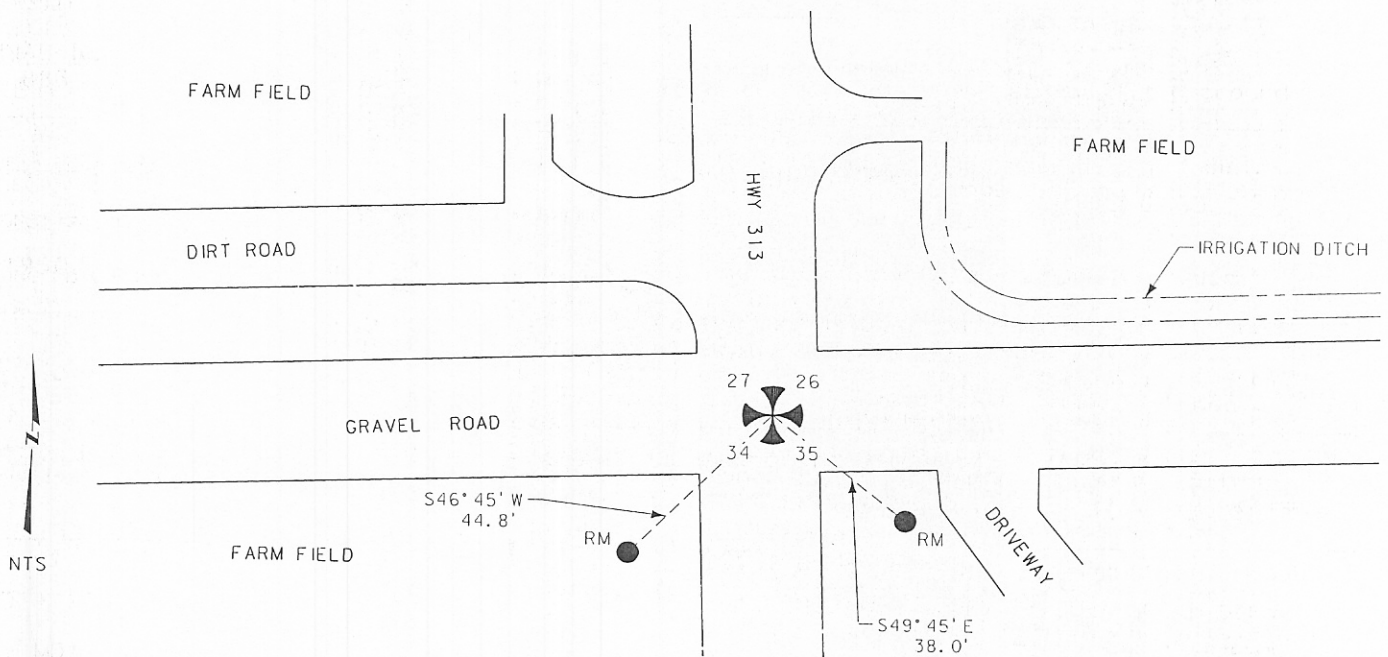
The cor. of secs. 26, 27, 34, and 35, at the intersection of graded roads bearing E. and W. with the highway, at a determined point from the right of way fences, accepted as the best available evidence of the corner position. At the corner point, drive an automobile valve stem, 1 1/2 ins. diam., 6 in. stem, flush with the surface of the pavement from which, an iron post, 28 ins. long, 2 1/2 ins. diam., set 24 ins. in the ground, for reference monument, bears S. 49° 45' E., 38.0 ft. dist., with a brass cap mkd. S35 RM 38.0 FT 1950 and an arrow pointing to the true cor. An iron post, 28 ins. long, 2 1/2 ins. diam., set 24 ins. in the ground, for reference monument, bears S. 46° 45' W., 44.8 ft. dist., with a brass cap mkd. S34 RM 44.8 FT 1950 and an arrow pointing to the true cor. Roswell M. Humphrey Cadastral Engineers

FOUND - MDT 2007

Found PK Nail with two BLM brass cap reference monuments, as shown below

SET - MDT 2007

Replaced PK Nail with an MDT aluminum cap on rebar



CERTIFICATION

I, \_\_\_\_\_ CERTIFY THE INFORMATION SHOWN HEREIN IS TRUE AND CORRECT.

SIGNATURE GROUND PARTY CHIEF

David M. Hoarling  
DAVID M. HOARLING  
13603LS

I, \_\_\_\_\_ CERTIFY THAT THIS CORNER RECORD CORRECTLY REPRESENTS WORK PERFORMED BY ME OR UNDER MY DIRECTION IN COMPLIANCE WITH THE CORNER RECORDATION ACT (MCA 17-22-ADY, ET SEQ.) AND A.1.

SIGNATURE SURVEYOR & SEAL

DATE: 11/6/2007

EMPLOYER: MONTANA DEPARTMENT OF TRANSPORTATION

SKETCH OF CORNER:

OFFICE OF CLERK AND RECORDER, COUNTY OF \_\_\_\_\_ THIS CORNER

RECORD WAS FILED FOR RECORD ON NOV 07 2007

WAS NOTED ON THE CROSS-INDEX PLAT AND IS ASSIGNED PAGE NO. 384 IN

BOOK NO. 5

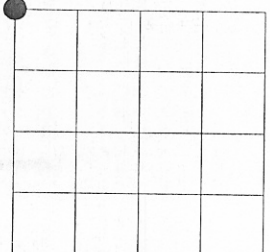
*CGA* 337988

*Roswell M. Humphrey*  
COUNTY OFFICIAL

CROSS INDEX NO. V-17 T. 1 S R. 33 E P.M.M.

ADOPTED JULY 1, 1981, MONTANA BOARD OF PROFESSIONAL ENGINEERS & LAND SURVEYORS

SEC. 35



• CORNER THIS SHEET