

CERTIFIED CORNER RECORDATION

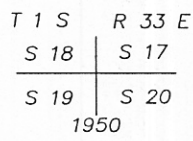
Corner Corner common to Sections 17,18,19 & 20 T. 1 S R. 33 E P.M.M. Big Horn County

ORIGINAL RECORD: (Blake, 1883) Set a post 4 ft. long 5 ins. sq. with marked stone 12 ins. in the ground for cor. to secs. 17, 18, 19, and 20. Marked
 T 1 S. S17 on NE.
 R 33 E. S20 on SE.
 S19 on SW. and
 S18 on NW faces.
 with 3 notches on S. and 5 on E. edges. dug pits 18 x 18 x 12 ins. in each sec. 5 1/2 ft. dist. and raised a mound of earth 2 ft. high. 4 1/2 ft. base around post.

SUBSEQUENT RECORD: (Lampert, 1905) Set a sandstone, 16 x 10 x 4 ins., 11 ins. in the ground, for cor. of secs. 17, 18, 19, and 20, marked with 3 notches on S., and 5 notches on E. edges: dig pits 18 x 18 x 12 ins., in each sec. 5 1/2 ft. dist., and raised a mound of earth 4 ft. base, 2 ft. high, West of cor.

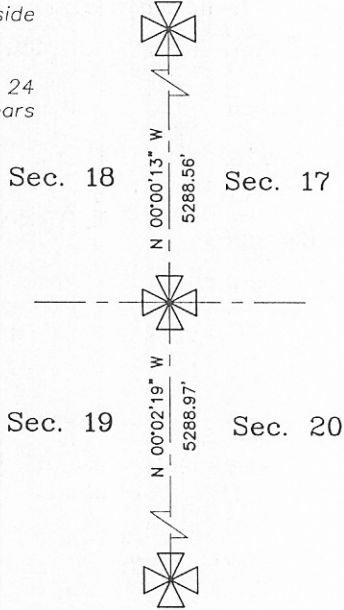
SUBSEQUENT RECORD: (Scott & Humphrey, 1950) The cor. of secs. 17, 18, 19, and 20, marked by the monument set in the 1905 re-establishment, a sandstone, 17x12x4 ins. dimly marked, buried 6 ins. below the surface of the ground, at the corner of an intersection of graded roads bearing N., S., E., and W.

At the corner point
 Set an iron post, 28 ins. long, 2 1/2 ins. diam., 34 ins. in the ground, with brass cap mkd.



encircle the iron post with a copper wire ring, 11 ins. diam. and bury the corner stone on the W. side of the iron post from which
 An iron post, 28 ins. long, 2 1/2 ins. diam., set 24 ins. in the ground, for a reference monument, bears N50°30'E., 51.6 ft. dist., with brass cap mkd. S17 RM 51.6 FT 1950 and an arrow pointing to the true cor.

An iron post, 28 ins. long, 2 1/2 ins. diam., set 24 ins. in the ground, for a reference monument, bears S45°E., 56.0 ft. dist., with brass cap mkd. S20 RM 56.0 FT 1950 and an arrow pointing to the true cor.



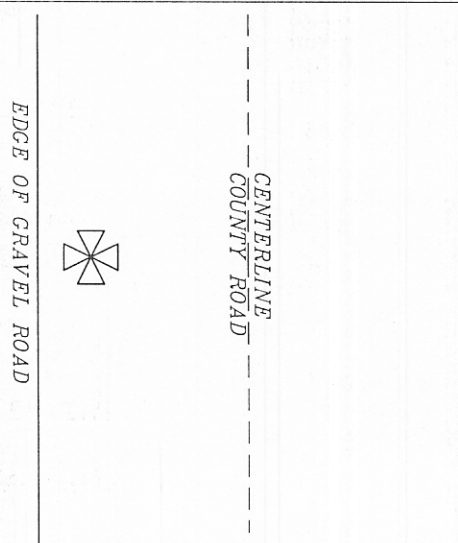
EVIDENCE: Found brass cap as described in subsequent record, 1 1/2 feet below west edge of gravel road.

PERPETUATION: NONE



Section corner found

NOT TO SCALE



SKETCH OF CORNER

CERTIFICATION

I, _____
 certify the information shown herein is true and correct.

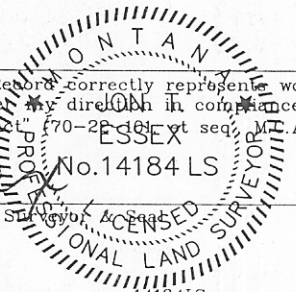
Signature Ground Party Chief

I, J.T. Essex
 certify that this Corner Record correctly represents work performed by me or under my direction in compliance with the "Corner Recordation Act" (70-22-101 et seq., M.T.A.)

JT Essex
 Signature of Surveyor & Recorder
 No. 14184 LS

Date: June 2007 Reg. No. 14184LS

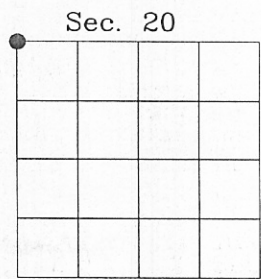
Employer: Interstate Engineering Inc.



Office of Clerk and Recorder, County of _____ . This "corner record" was filed for record on _____ was noted on the cross-index plat and is assigned page No. 58, in book No. 4

Lady J. Marshall
 County Official

Cross Index No. N5 - T 1 S R 33 E P.M.M.



● corner this sheet

Adopted July 1, 1981, Montana Board of Professional Engineers & Land Surveyors

STATE OF MONTANA 338807
 County of Big Horn

The within instrument was filed in my office at Hardin, Montana, this 3/7/2008 at 3:56 PM

 County Recorder

By _____, Deputy