

CERTIFIED LAND CORNER RECORDATION

DESCRIPTION OF CORNER EVIDENCE FOUND, AND ORIGINAL RECORD (IF KNOWN)

The $\frac{1}{4}$ sec. cor. of secs. 5 and 8, is determined by proportionate measurement.

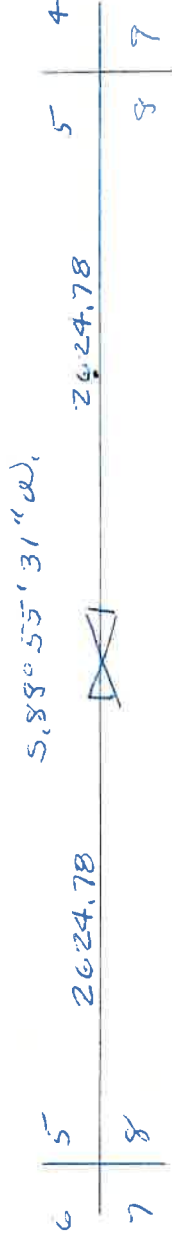
DESCRIPTION OF MONUMENT AND ACCESSORIES ESTABLISHED TO PERPETUATE THE ORIGINAL LOCATION OF THIS CORNER:

Date of work: June 1977

At the corner point

Set an iron pin $\frac{5}{8}$ " x 24", 21" in the ground, with plastic cap marked L. V. TOUT 2358S

SKETCH, WITH COURSE AND DISTANCE TO ADJACENT CORNERS IF DETERMINED IN THIS SURVEY. (MAY SKETCH OR PASTE REPRODUCTION ON REVERSE SIDE.)



Surveyor's Seal

I, Louis V. Tout, certify that the information shown herein is true and correct.

Louis V. Tout
Signature of Ground Party Chief

DIAGRAM OF CORNER:



I, Louis V. Tout, certify that I have carefully performed or reviewed the work done on the diagrammed corner as reported on this recordation form and approve the same.

Louis V. Tout
Signature of Surveyor

= Corner recorded on the sheet

2358S
Registration Number

154163

Office of Clerk and Recorder, County of Park

This "corner record" was filed for record on the 27 day of February 1977, was noted on the cross-index plat and is assigned page No. 55, in book No. one

Margaret Thomas
County Official

Fee - 50 cents

Cross Index No. 5-7 T. 1 S. R. 10 E. Mer.

CERTIFIED LAND CORNER RECORDATION

DESCRIPTION OF CORNER EVIDENCE FOUND, AND ORIGINAL RECORD (IF KNOWN)

The $\frac{1}{4}$ sec. cor. of secs. 7 and 8, is determined by proportionate measurement.

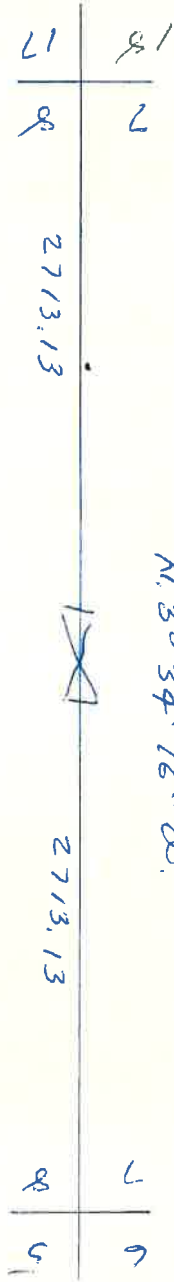
DESCRIPTION OF MONUMENT AND ACCESSORIES ESTABLISHED TO PERPETUATE THE ORIGINAL LOCATION OF THIS CORNER:

Date of work: June 1977

At the corner point

Set an iron pin $5/8"$ X $24"$, 21" in the ground, with plastic cap marked L. V. TOUT 2358S.

SKETCH, WITH COURSE AND DISTANCE TO ADJACENT CORNERS IF DETERMINED IN THIS SURVEY. (MAY SKETCH OR PASTE REPRODUCTION ON REVERSE SIDE.)



Surveyor's Seal

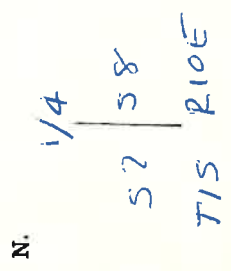
I, Louis V. Tout certify that the information shown herein is true and correct.

Louis V. Tout
Signature of Ground Party Chief

I, Louis V. Tout certify that I have carefully performed or reviewed the work done on the diagrammed corner as reported on this recordation form and approve the same.

Louis V. Tout
Signature of Surveyor

DIAGRAM OF CORNER:



= Corner recorded on the sheet

2358S
Registration Number

154162

Office of Clerk and Recorder, County of Park

This "corner record" was filed for record on the 27 day of February 1977, was noted on the cross-index plat and is assigned page No. 54, in book No. one

Margaret Muncial
County Official

Cross Index No. *2358S* T. *15* R. *10 E* Mer.