

Greg Hansen

714 - 322-9592

CERTIFIED LAND CORNER RECORDATION

DESCRIPTION OF CORNER EVIDENCE FOUND, AND ORIGINAL RECORD (IF KNOWN)

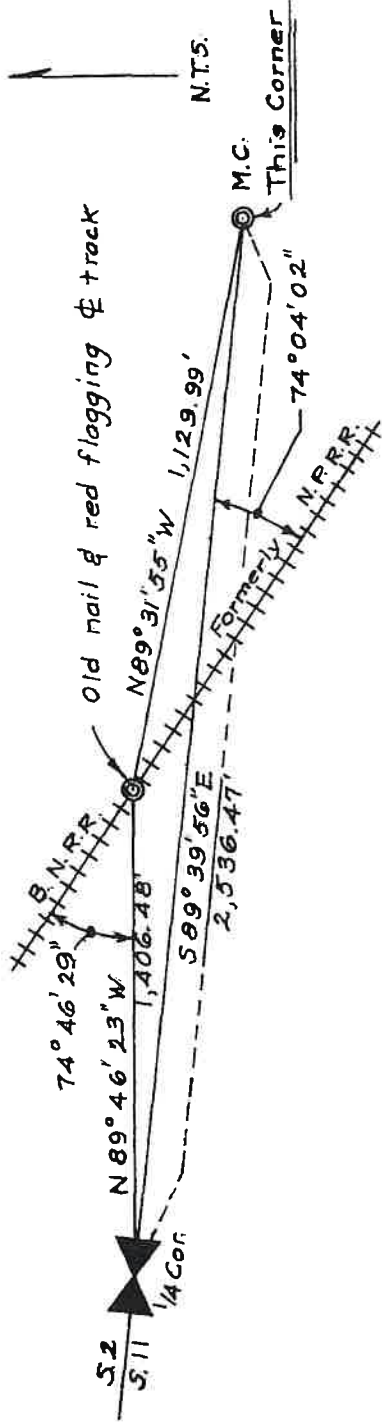
Found a 1" diam. nickel plated tab on a steel "T"-bar marked M. C. 2-11 with a 3/4" diam. galv. pipe 0.22' E. and a very old 1" square head buggy axle 0.19' W. Origin unknown. (Record: As the line bet. sec. 2 and 11 is fract, I run East on a true line bet. secs. 2 and 11, Va. 19°00' E., at 78.45 chs., Left bank of Yellowstone River. Set a post 4 ft. long, 4 ins. square, with marked stone, 12 ins. in the ground for meander corner to fract. secs. 2 and 11 marked M. C. and T.3S., S.2 on the N. face; R.9E., S.11 on the S. face. and raised a mound of stone covered with earth around the post.)

DESCRIPTION OF MONUMENT AND ACCESSORIES ESTABLISHED TO PERPETUATE THE ORIGINAL LOCATION OF THIS CORNER:

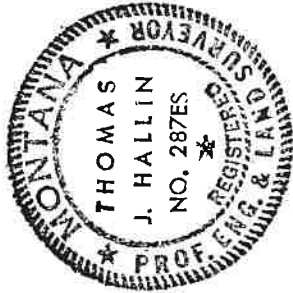
Date of work: 10-28-75

No remonumentation necessary. The Burlington Northern (N.P.R.R.) alignment sheet shows a deflection angle of 74°40' left to the line between Secs. 2 and 11 and a distance of 1,407.7' westerly to the 1/4 corner and 1,130.0' easterly to the Section corner which was never set according to the original survey. Obviously, the latter corner is the M. C. located above as shown by the close agreement to the distance shown below. The straight-line bearing from the 1/4 corner to the M.C. is S 89°39'56" E a distance of 2,536.47 feet which gives a deflection angle of 74°40'02" left from the R.R. As the original notes show the Yellowstone River as 19.86 chs. and the distance is now 8.21 chs., it appears that the (over)

SKETCH, WITH COURSE AND DISTANCE TO ADJACENT CORNERS IF DETERMINED IN THIS SURVEY. (MAY SKETCH OR PASTE REPRODUCTION ON REVERSE SIDE.)



Surveyor's Seal



I, Carl Lindeblad certify that the information shown herein is true and correct.

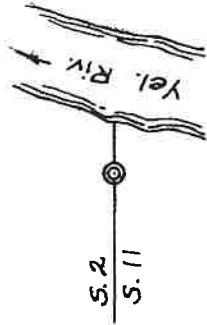
Signature of Ground Party Chief

I, Thomas J. Hallin certify that I have carefully performed or reviewed the work done on the diagrammed corner as reported on this recordation form and approve the same.

Signature of Surveyor

DIAGRAM OF CORNER:

N. M.C. ?



= Corner recorded on the sheet

139890

287 E.S. Registration Number

Office of Clerk and Recorder, County of Gall was filed for record on the 7th day of April 1975, at 1:30 pm Marguerite Monreal

This "corner record" was filed for record on the 7th day of April 1975, was noted on the cross-index plat and is assigned page No. 18, in book No. Cal.

Clerk and Recorder Official Marguerite Monreal Park County, Montana 366 R. 9E. always Mer.

M. C. as shown could be between Secs. 1 and 12. However, S.H. Crookes, former county surveyor, prepared a plat of the petition of Thos. S. Carter of a survey of Mar. 14, 1898 which is on file in the County Commissioner's road plat book which shows the M. C. and Carter's bridge in essentially the same positions as found this survey and shown hereon and places the M. C. on the line between Secs. 2 and 11 (See fieldbook County Book No. 2, p. 39, Clerk and Recorder's office). There are also discrepancies between the original fieldnote calls and what is shown hereon, namely:

<u>Description</u>	<u>Record</u>	<u>Actual</u>
‡ (S.2&S.11) - N.P.R.R.	East, 11.00 chs. (726.00')	1,406.48' (N.P. 1,407.7')
N.P.R.R. - M. C. (S.2&S.11)	East, 27.45 chs. (1,811.70')	1,129.99' (N.P. 1,130.0')