

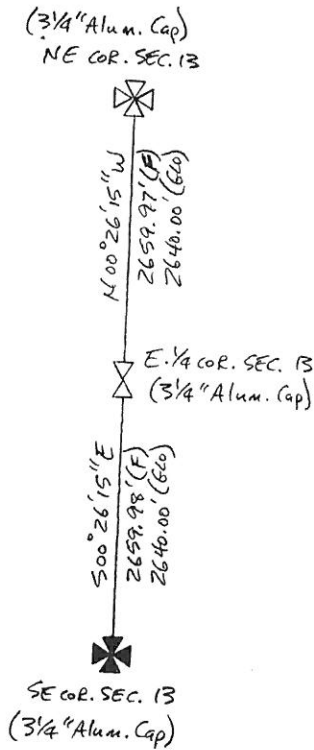
corners.  
 3. Description of monument and accessories set to perpetuate the corner position.  
 4. Sketch of corner, show all pertinent data which can best be shown in a sketch example, corner marking, topography like, position of accessories, etc.  
 5. Certification must be signed and sealed by Registered Land Surveyor in State of Montana.  
 6. Fill in Cross Index & Section Diagram at bottom of sheet.

# CERTIFIED CORNER RECORDATION

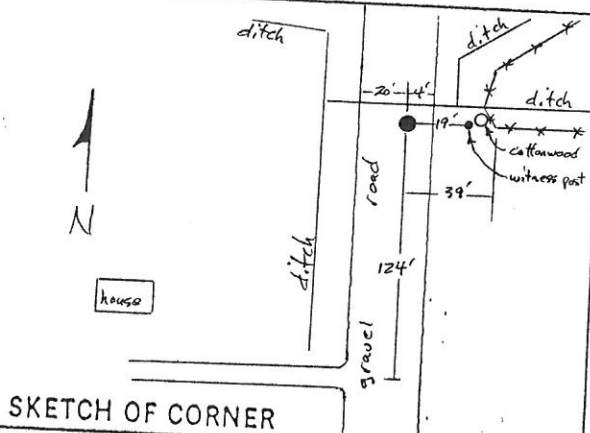
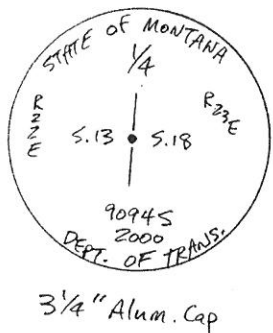
Corner East 1/4 Cor. Sec. 13 T. 32N R. 22E P.M.M. Blaine County

1. '1890' GLO - Set a sandstone 12x8x6 ins., 8 ins. in the ground for 1/4 sec. cor. marked 1/4 on W. face, dug pits 18x18x12 ins. N. and S. of stone, 5-1/2 ft. dist. and raised a mound of earth alongside.
2. No original or subsequent evidence found. I established the location of this corner by single proportion between corners to the north and south. Corner falls in a gravel road.
3. Set a MDOH pipe with a 3-1/4" aluminum cap 6" deep in gravel road. Set a witness post 19' East at the base of a cottonwood tree.

STATE OF MONTANA BLAINE COUNTY 332266  
 RECORDED: 08/22/2001 8:00 BOOK: 50 MISCBOOK PAGE: 722 DOC #: 332266  
 SANDRA L. BOARDMAN CLERK AND RECORDER BY: Laurie Sue Regg FEE: \$0.00  
 THOMAS, DEAN & HOSKINS, INC. 1200 25TH STREET SOUTH, GREAT FALLS, MT 59405

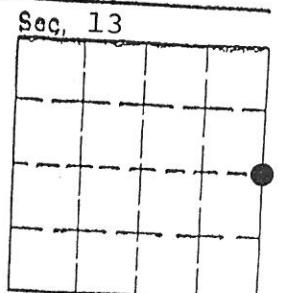


ENTERED [Signature]  
 DIRECT   
 INDIRECT



CERTIFICATION  
 Robert F. Stangler  
 I, Robert F. Stangler  
 certify the information shown herein is true and correct.  
 Signature of Registered Professional Land Surveyor  
 Robert F. Stangler  
 I, Robert F. Stangler  
 certify that this Corner Record correctly represents work performed by me or under my direction in compliance with the "Corner Recordation Act" (70-22-101, et seq., M.C.A.) 9094 S  
 Signature of Surveyor  
 Date: 10/19/00 Reg. No. 9094 S  
 Employer: TD&H, Inc.

Office of Clerk and Recorder, County of Blaine, This "corner record" was filed for record on the August 22, 2001 @ 8:00 a.m. day of 1901, was noted on the cross-index plat and is assigned page No. 722, in book No. 50 Misc  
Laurie Sue Regg, Deputy  
 County Official



Cross Index No. L-25 T. 32N R. 22E P.M.M.

• corner this sheet

Doc # 332266