

CERTIFICATE OF SURVEY 922

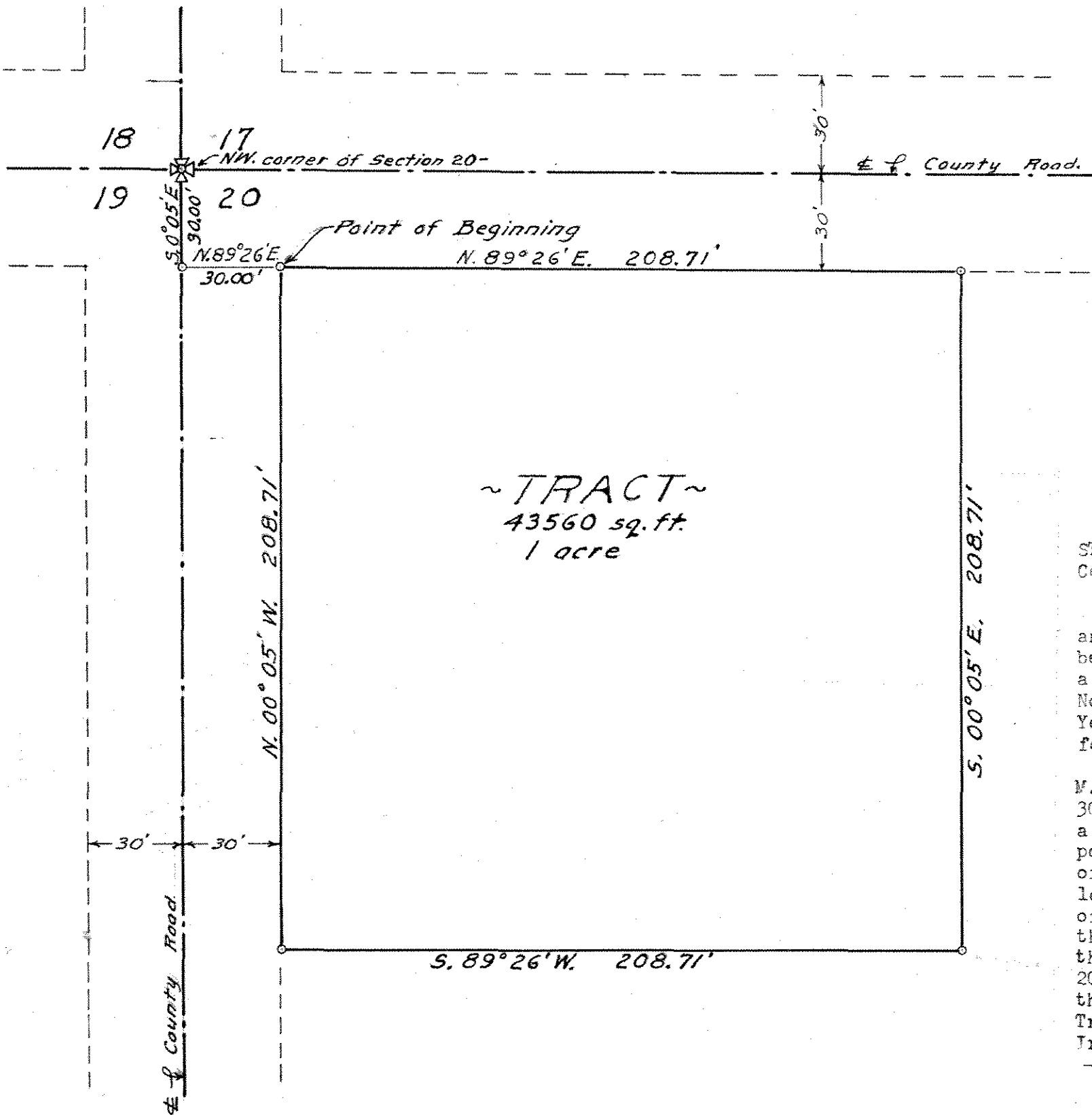
LOCATED IN NW¼NW¼, OF SECTION 20-T.2N.-R.24 E., M.P.M.,
YELLOWSTONE COUNTY, MONTANA.

FOR: HERMAN SCHROEDER, OWNER.

BY: ATLAS ENGINEERS INCORPORATED.
BILLINGS, MONTANA. MARCH, 1963.



SCALE 1" = 400'



CERTIFICATE OF SURVEY

STATE OF MONTANA)
County of Yellowstone) ss

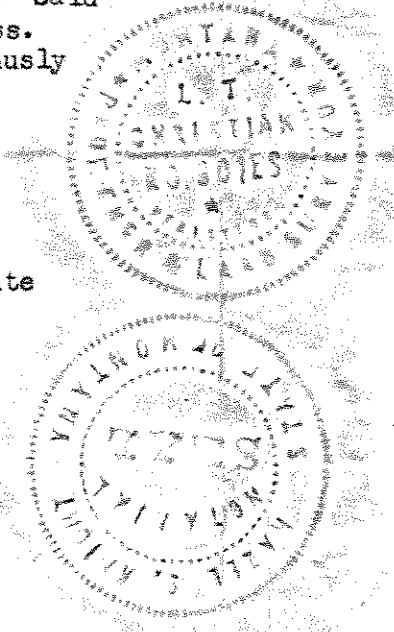
THIS IS TO CERTIFY THAT I, L. T. Christian, a Professional Engineer and Land Surveyor, Registration No. 301-ES, in the State of Montana, being first duly sworn, deposes and says that at the request of the owner, a survey was made under his supervision of a Tract of land situated in the Northwest corner of the NW¼NW¼ of Section 20 - T. 2 N. - R. 24 E., M.P.M., Yellowstone County, Montana, more particularly bounded and described as follows, to-wit:

Commencing at the Northwest corner of Section 20 - T. 2 N. - R. 24 E., M.P.M., Yellowstone County, Montana, thence S. 00° 05' E. a distance of 30.00 feet on and along the West line of said Section 20, thence N. 89° 26' E. a distance of 30.00 feet paralleling the North line of said Section 20 to a point of intersection with the East Right-of-way line of County road, Point of Beginning, thence continuing N. 89° 26' E. a distance of 208.71 feet paralleling the North line of said Section 20 and on and along the South Right-of-way line of County road, thence S. 00° 05' E. a distance of 208.71 feet, thence S. 89° 26' W. a distance of 208.71 feet to a point of intersection with the East Right-of-way line of County road, thence N. 00° 05' W. a distance of 208.71 feet, paralleling the West line of said Section 20 and on and along the East Right-of-way line of said County road to Point of Beginning. Said Tract of land containing 43560 square feet or One (1) acre more or less. Iron pins were placed at all four (4) corners of said Tract marked thusly, that the plat conforms to the work on the ground.

L. T. Christian
L. T. Christian, P. E., No. 301-ES

Subscribed and sworn to before me, a Notary Public in and for the State of Montana, this 5 day of April, 1963.

David S. Knick
Notary Public in and for the State of Montana.
Residing at Billings, Montana. My Commission expires Sept 22 - 1964



CERTIFICATE OF APPROVAL

STATE OF MONTANA)
County of Yellowstone) ss.

We hereby certify that we have examined the annexed plat and find that it conforms with the laws of the State of Montana. No park requirements are called for under a Certificate of Survey. It is therefore accepted and approved for filing with the County Clerk and Recorder.

IN WITNESS WHEREOF, we have set our hands and affixed the official seal of the County of Yellowstone, Montana, this 23rd day of April, 1963.

Chairman

Commissioner

CHRIS RUBICH Commissioner

County Clerk & Recorder

Deputy

County Surveyor's Office

County Clerk and Recorder

705447

STATE OF MONTANA)
County of Yellowstone) ss

I hereby certify that the annexed plat was filed for record in my office this 23rd day of April, 1963, at 1:52 o'clock P M.

CHECKED IN COUNTY SURVEYOR'S OFFICE

5 APRIL 1963 BY *[Signature]*

CHRIS RUBICH
County Clerk & Recorder
Deputy

