

AMENDED PLAT

to revise 5 lots and tracts in Block 18, Original Townsite of Gardiner and SD Plat No. 54 and to define a tract of land created by previous description, but described by different wording in a recent conveyance.

in Govt. Lots 6 & 7 of Section 23, T9S, R9E, MPM, PARK COUNTY, MONTANA

FOUND MONUMENTS

A number of monuments were found in the area addressed by this plat. As the lots were simultaneous conveyances, measurements must be proportioned within the block. But many of the found monuments do not harmonize with each other. Some of the found monuments were accepted as determining the precise location of the block (see legend and C/S 498). A number of thick-walled lengths of pipe were obviously set (professionally? by whom?) as lot (or ownership) corners. Although these all fall within two feet (some within one foot) of the locations I have determined, the variances are random. Hence, I have set Surv Kaps at my locations, leaving the pipes in place and showing their locations in the table on the right. I found Surv Kaps marked "97059" or "97089" near most of the locations shown on SD 54, which was prepared by Raymond W. Kap (completing work started by John O. Drivdahl) for John Orser in 1982. I center-punched each of these caps, and accepted the ones within the lands then owned by John Orser as controlling. Where they were intended to fall on ownership boundaries, I accepted them as closing corners. The bearings and distances on the face of this plat are between true points, as I have determined them. The relation of the true points and the found monuments are shown in the table on the right. I first researched this area in 1972. Where I know that landowners have set rough monuments since that time, I have so indicated and have not tied these monuments to this work.

See C/S 498 for BASIS OF BEARINGS AND REESTABLISHMENT OF BLOCK 18.
See Sheet 2 for PURPOSES & DESCRIPTIONS

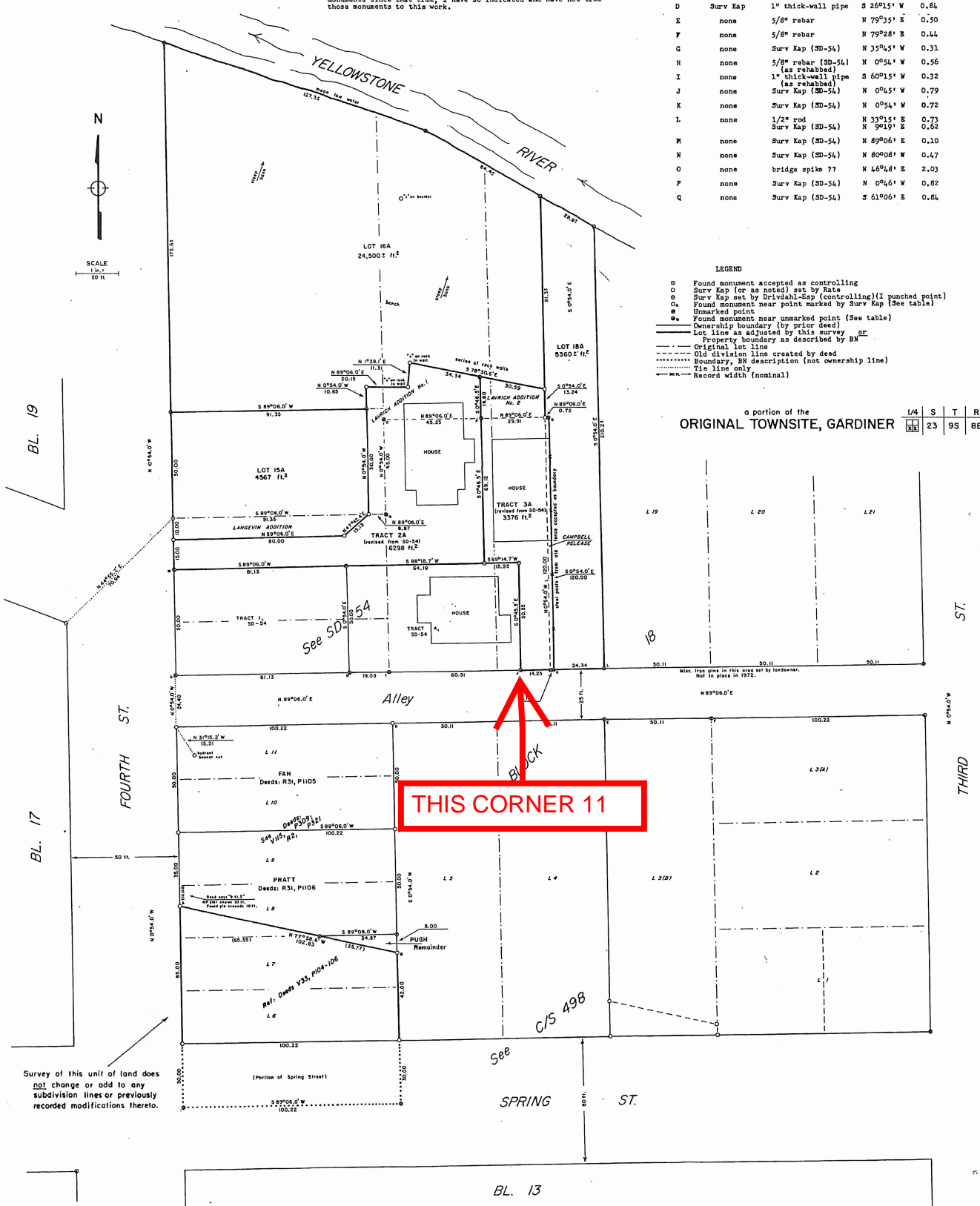
TABLE OF FOUND MONUMENTS

POINT	MONUMENT AT TRUE POINT	FOUND MONUMENT NEAR TRUS POINT	TRUE POINT TO FOUND MONUMENT Bearing	Distance
A	Surv Kap	3/4" pipe	S 61°23' W	0.50
B	Surv Kap	3/4" pipe	S 26°31' W	1.70
C	Surv Kap	1" thick-wall pipe	S 90°00' W	1.10
D	Surv Kap	1" thick-wall pipe	S 26°15' W	0.64
E	none	5/8" rebar	N 79°35' E	0.50
F	none	5/8" rebar	N 79°28' E	0.44
G	none	Surv Kap (SD-54)	N 35°45' W	0.31
H	none	5/8" rebar (SD-54) (as rehabbed)	N 0°54' W	0.56
I	none	1" thick-wall pipe (as rehabbed)	S 60°15' W	0.32
J	none	Surv Kap (SD-54)	N 0°45' W	0.79
K	none	Surv Kap (SD-54)	N 0°54' W	0.72
L	none	1/2" rod	N 33°15' E	0.73
		Surv Kap (SD-54)	N 9°19' E	0.62
M	none	Surv Kap (SD-54)	N 89°06' E	0.10
N	none	Surv Kap (SD-54)	N 80°08' W	0.47
O	none	bridge spik 77	N 46°48' E	2.03
P	none	Surv Kap (SD-54)	N 0°46' W	0.82
Q	none	Surv Kap (SD-54)	S 61°06' E	0.64

LEGEND

- Found monument accepted as controlling
- Surv Kap (or as noted) set by Rate
- Surv Kap set by Drivdahl-Kap (controlling) (I punched point)
- Found monument near point marked by Surv Kap (See table)
- Unmarked point
- Found monument near unmarked point (See table)
- Ownership boundary (by prior deed)
- Lot line as adjusted by this survey or
- Property boundary as described by BW
- Original lot line
- Old division line created by deed
- Boundary, BW description (not ownership line)
- Tie line only
- Record width (nominal)

a portion of the ORIGINAL TOWNSITE, GARDINER 1/4 S T R 23 9S BE



BL. 19

BL. 17

FOURTH ST.

THIS CORNER 11

BL. 13

SPRING ST.

ST.

THIRD

Survey of this unit of land does not change or add to any subdivision lines or previously recorded modifications thereto.

Sheet 1 of 2 S18-574-A

