

(1)(10)(20)
 (26-27)
 131-132

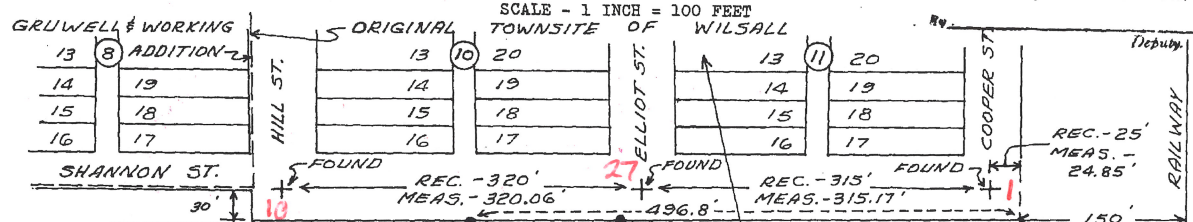
Survey Plat

of a Tract of Land in the SW 1/4 of Section 19,
 Township 3 North, Range 9 East, M.P.M.
 COUNTY OF PARK, STATE OF MONTANA

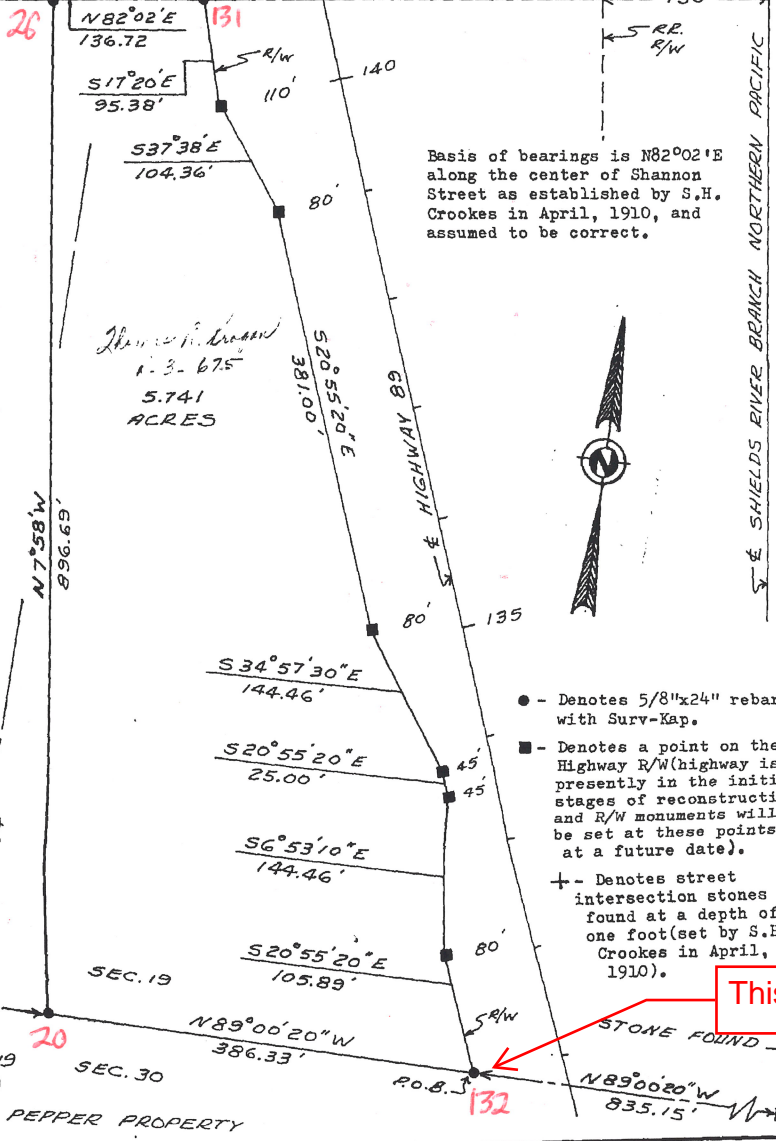
SURVEY REQUESTED BY TOM BROGAN

Filed this _____ Day of _____
 A. D. 19____

 County Clerk and Recorder.



DESCRIPTION
 A tract of land located in the SW 1/4 of Section 19, Township 3 North, Range 9 East, Principal Meridian, Park County, Montana, more particularly described as follows:
 Commencing at the South 1/4 corner of said Section 19, T.3N., R.9E.; thence N 89°00'20" W along the South line of said Section 19 a distance of 835.15 feet to a point on the West right-of-way line of Highway 89, the true point of beginning; thence continuing N89°00'20"W a distance of 386.33 feet; thence N 7°58' W a distance of 896.69 feet to a point on the South line of Shannon Street in the original townsite of Wilsall; thence N 82°02' E along the South line of said Shannon Street a distance of 136.72 feet to a point on the West right-of-way line of Highway 89; thence S 17°20' E a distance of 95.38 feet; thence S 37°38' E a distance of 104.36 feet; thence S 20°55'20" E a distance of 381.00 feet; thence S 34°57'30" E a distance of 144.46 feet; thence S 20°55'20" E a distance of 25.00 feet; thence S 6°53'10" E a distance of 144.46 feet; thence S 20°55'20" E a distance of 105.89 feet to the true point of beginning. Said tract contains 5.741 acres.



JORDAN TRACT
 SW 1/4 SW 1/4
 SE 1/4 SW 1/4

FOUND 18" BOLT AT CITY LIMITS CORNER SET BY C.T. SACKET IN APRIL, 1919 (GRUWELL & WORKING ADDITION)

PEPPER PROPERTY



I, Raymond W. Esp, Registered Land Surveyor, Registration # 3708S, do hereby certify that during the month of July, 1972, I surveyed the above tract of land and the plat thereof is a true and correct representation of the work performed on the ground.

Raymond W. Esp
 Date July 26, 1972

EXAMINED AND APPROVED
 NOV 29 1972
 BOARD OF COUNTY COMMISSIONERS

Raymond Marshall
 CHAIRMAN

126-43
 STATE OF MONTANA) ss.
 County of Park)
 Filed this 4th day of December A.D. 1972
 @ 2:59 pm
Margaret Ironical
 County Clerk

By _____ Deputy
 Fee 50 cents