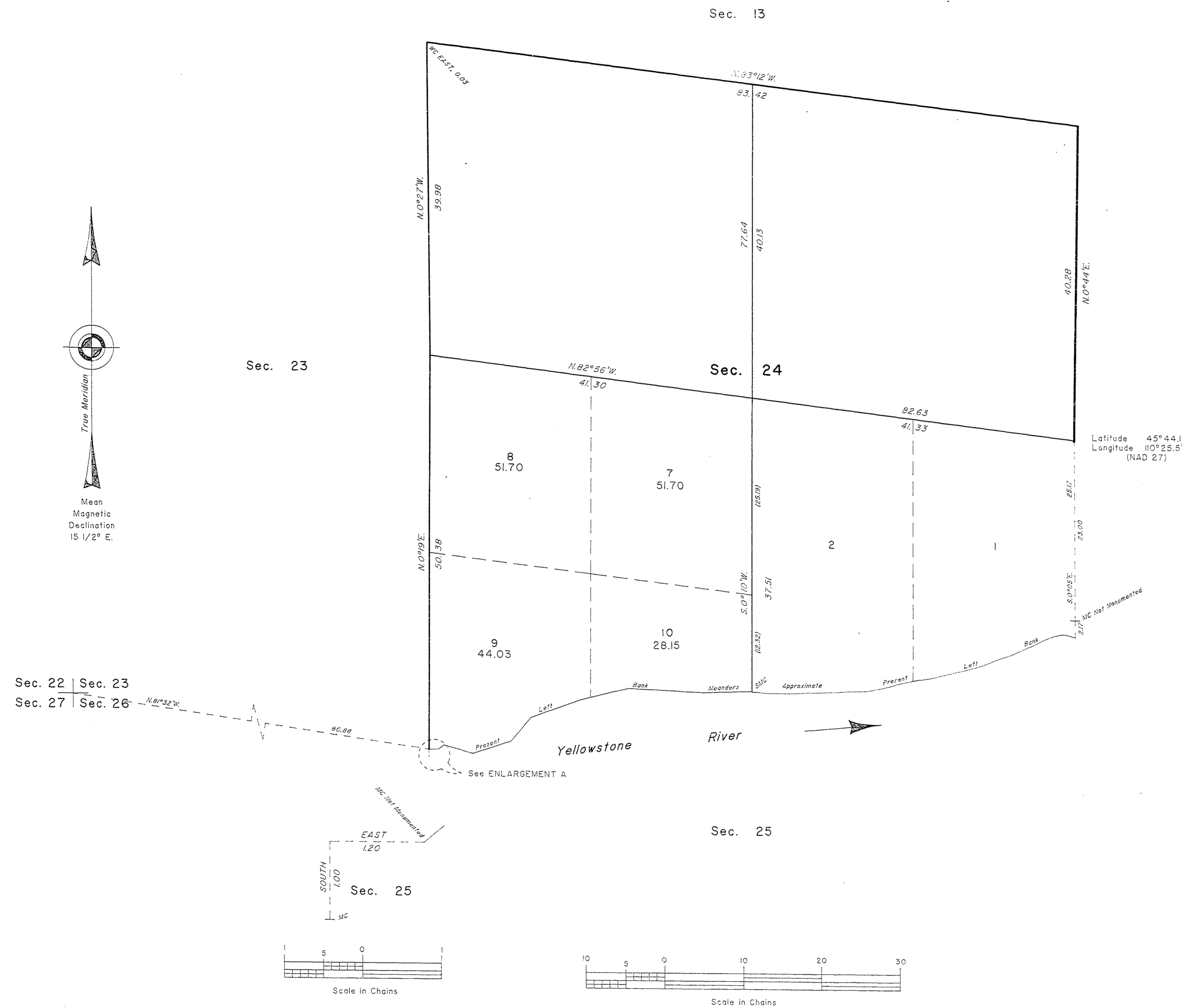
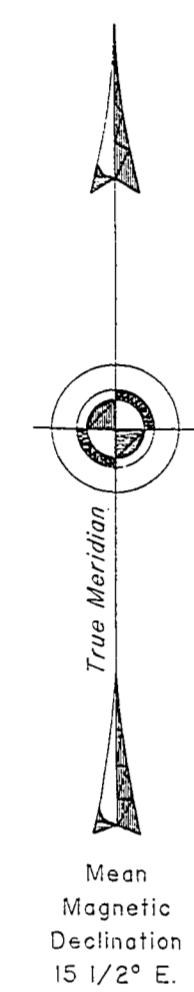


TOWNSHIP 1 SOUTH, RANGE 10 EAST, OF THE PRINCIPAL MERIDIAN, MONTANA
DEPENDENT RESURVEY, SUBDIVISION OF SECTION AND SURVEY



Latitude 45°44'N.
Longitude 109°25.5'W.
(NAD 27)

A history of surveys is contained in the field notes.

This plat represents the dependent resurvey of portions of the east boundary and subdivisional lines, designed to restore the corners in their true original locations according to the best available evidence, and the subdivision of section 24 and the survey of new meanders along the present left bank of the Yellowstone River through a portion of section 24, in Township 1 South, Range 10 East, Principal Meridian, Montana.

Except as indicated hereon, the lottings and areas are as shown on the plat approved August 12, 1873.

Survey executed by Steve L. Toth, Cadastral Surveyor, beginning September 8, 1992, and completed November 20, 1992, pursuant to Special Instructions dated August 25, 1992, for Group No. 820, Montana.

UNITED STATES DEPARTMENT OF THE INTERIOR
BUREAU OF LAND MANAGEMENT

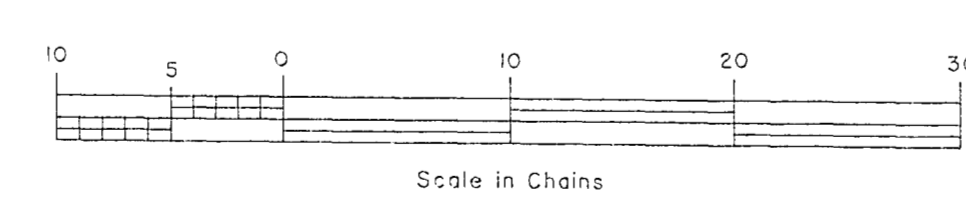
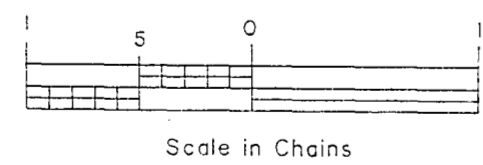
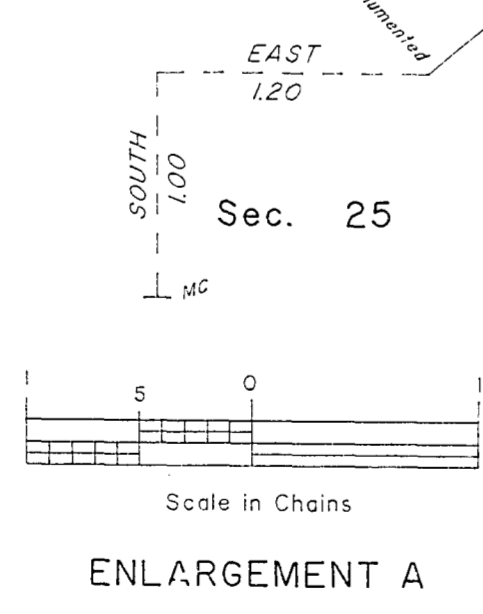
Billings, Montana March 22, 1994

This plat is strictly conformable to the approved field notes, and the survey, having been correctly executed in accordance with the requirements of law and the regulations of this Bureau, is hereby accepted.

For the Director

David T. Metts

Chief Cadastral Surveyor, Montana State Office



S.T.

OFFICIALLY FILED IN MONTANA STATE OFFICE June 16, 1998

T. 1 S., R. 10 E., P.M., MT

R.W.W.