



Montana Geo-Enabled Elections
MAGIP Big Sky GeoCon
April 5, 2023

Montana State Library Team


Erin Fashoway – Montana GIS Coordinator

Michael Fashoway – Land Info Lead, MSDI Structures & Address Theme Lead

Meghan Burns – GIS Analyst, MSDI Boundaries Theme Lead

Caroline Psaltis – GIS Specialist

Table of Contents

- 01 – Overview and Progress: Erin Fashoway
 - 02 – Election District Boundaries and Redistricting Resources: Meghan Burns
 - 03 – Geoprocessing Solutions: Caroline Psaltis
 - 04 – Addressing for NG9-1-1 and Geo-Enabled Elections: Michael Fashoway
 - 05 – Grant Opportunities and Closing: Erin Fashoway
- 

01
Overview and Progress
Erin Fashoway

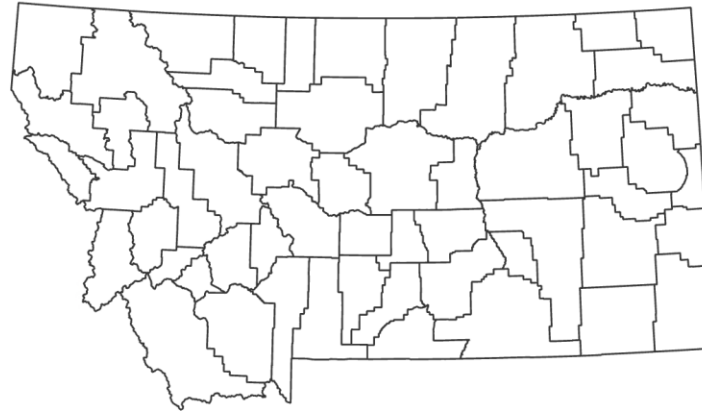


Key Players and Roles



Montana Secretary of State (SOS)

Manages the Election Management System (EMS)



County Governments

County Election Administrators update the Election Management System (EMS) with Districts, Precinct Splits, Voter Info, and provide boundaries to MSL



Montana State Library (MSL)

Update and maintain addresses, boundaries, and precinct splits

BEST PRACTICES for IMPLEMENTING GIS IN ELECTIONS



NSGIC
GEO-ENABLED ELECTIONS

Strategy

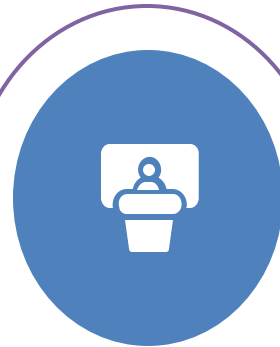
Step 1

Develop Election
Boundary Datasets



Step 3

Refinement of
Datasets



Step 5

Data Maintenance



Step 2

Testing in the Election
Management System



Step 4

Implementation
and Publishing



Goal: Create Precinct Splits for each County


What is a Precinct Split? Basically, a Ballot

- A Precinct Split is a subset of a Voting Precinct created by the various Election District Boundaries
- Not every County has an election for each type of district
 - Example: Hospital Districts
- Most counties have many of the same type of district
 - Examples: Schools and Fire Districts

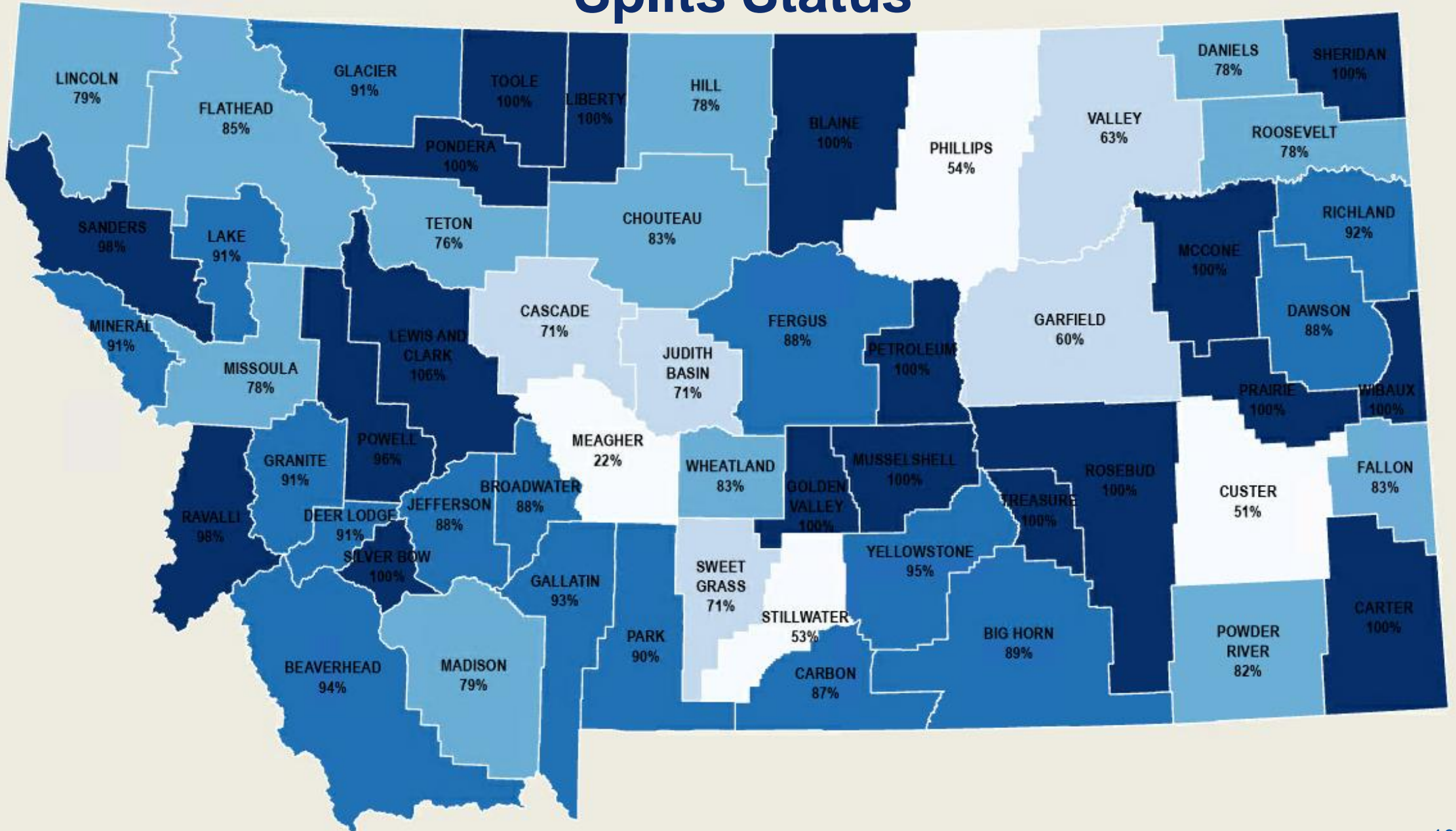
Election Calendar

| Month | Even Years | Odd Years |
|-----------|---|---|
| January | Candidate Filing / Boundary & Address Updates | Candidate Filing / Boundary & Address Updates |
| February | | |
| March | Primary Ballot Certification | |
| April | Special District Ballots / Ballots to UOCAVA for General Election | Special Districts Ballots |
| May | Special District Elections | Special District Elections |
| June | Primary | |
| July | Boundary Updates | Boundary Updates |
| August | Ballot Certification | Municipal Primary Ballots |
| September | UOCAVA Ballots | Municipal Primary |
| October | | Municipal General Ballots |
| November | General Election | Municipal General |
| December | | |

January 17 – ElectMT went live!

 Indicates when the Montana Secretary of State (SOS) can update the Election Management System (EMS) with GIS Data Layers from the Montana State Library (MSL)

Splits Status



*As of 3/27/2023, pre-redistricting

02

Election District Boundaries and Redistricting Resources

Meghan Burns



Goal: Provide GIS Layers for Election System

Current Base Layers (Foundational):

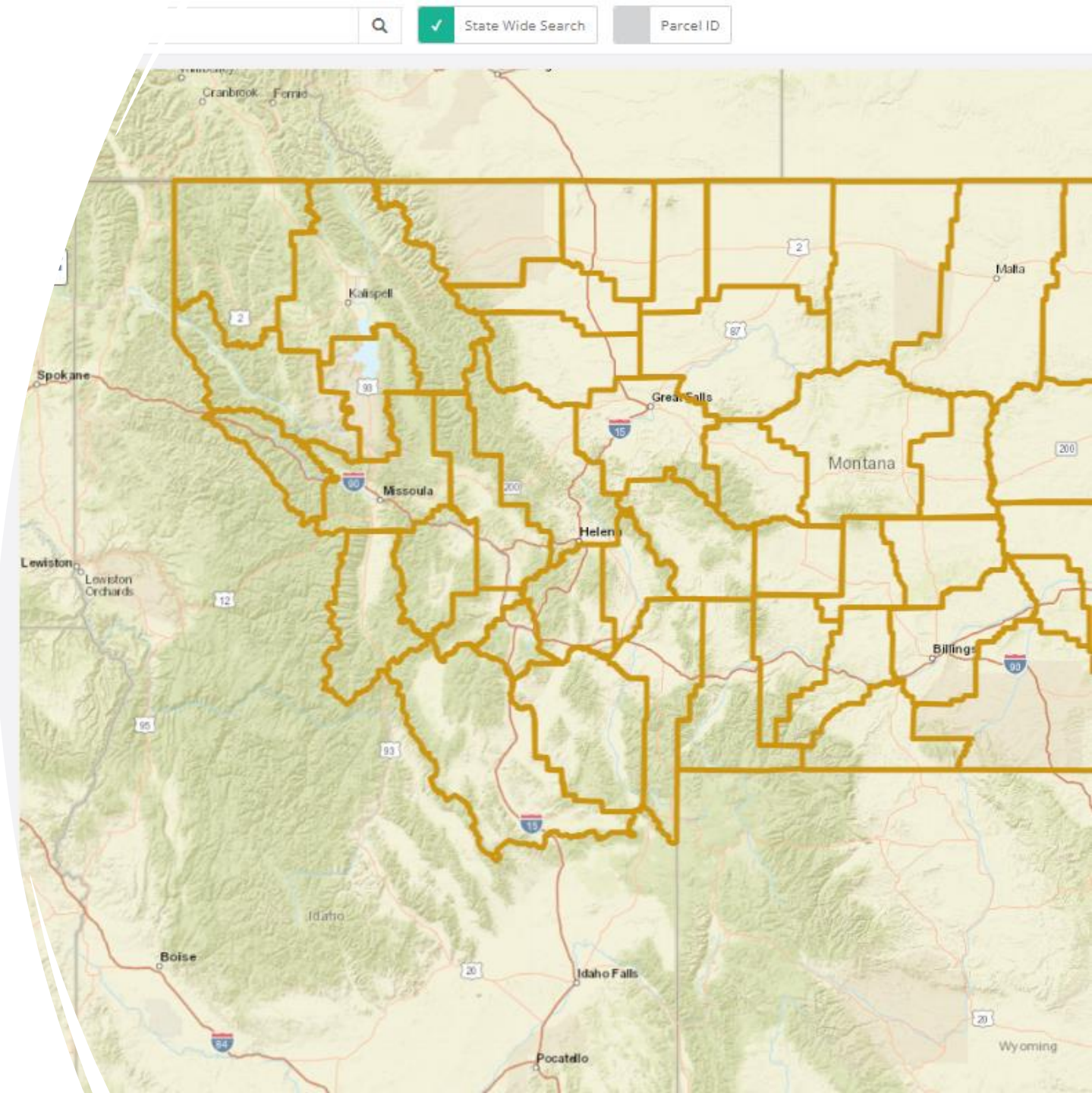
- County
- City
- Zip Code

Requested:

- School Districts
- Legislative Senate and House Districts (2024-2032)
- County Commissioner Districts

Updated is needed in TotalAddress

- MSL sends SOS a geojson file to upload



Goal: Map all Election Districts and Precinct Splits

Election District Status

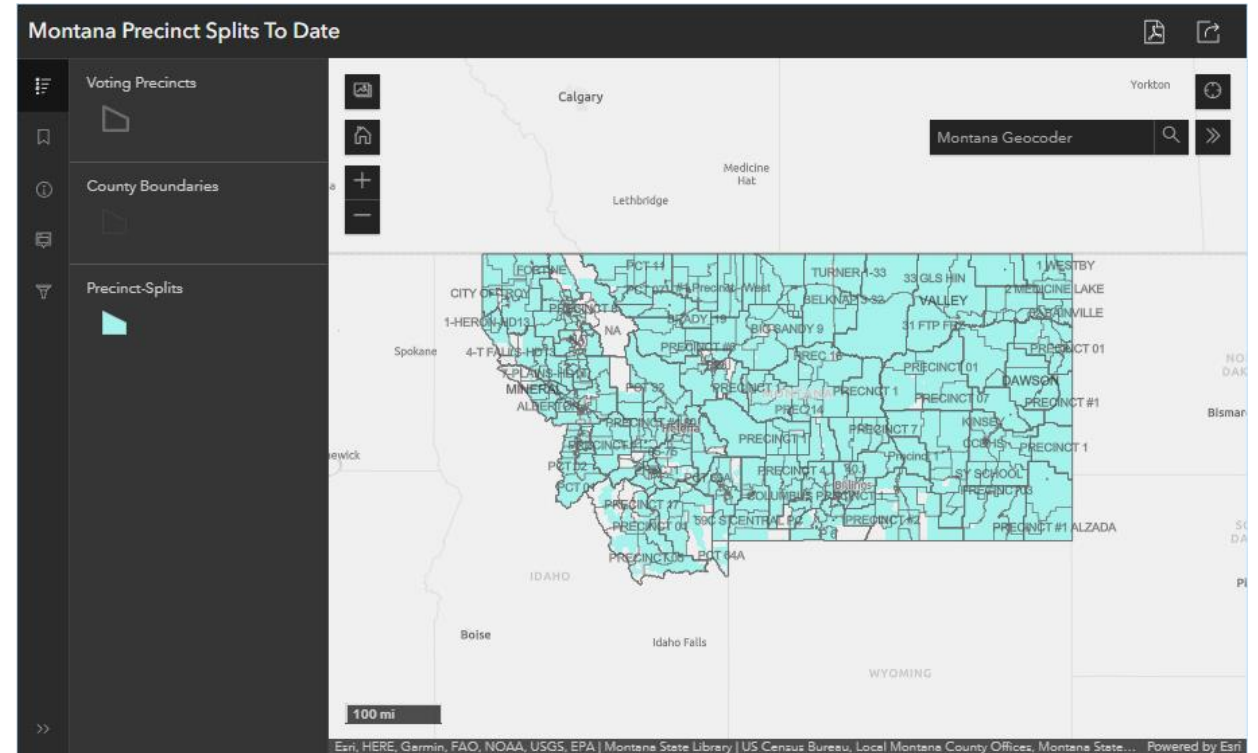
- Mapped all but 6 water/sewer districts

County Commissioner Districts

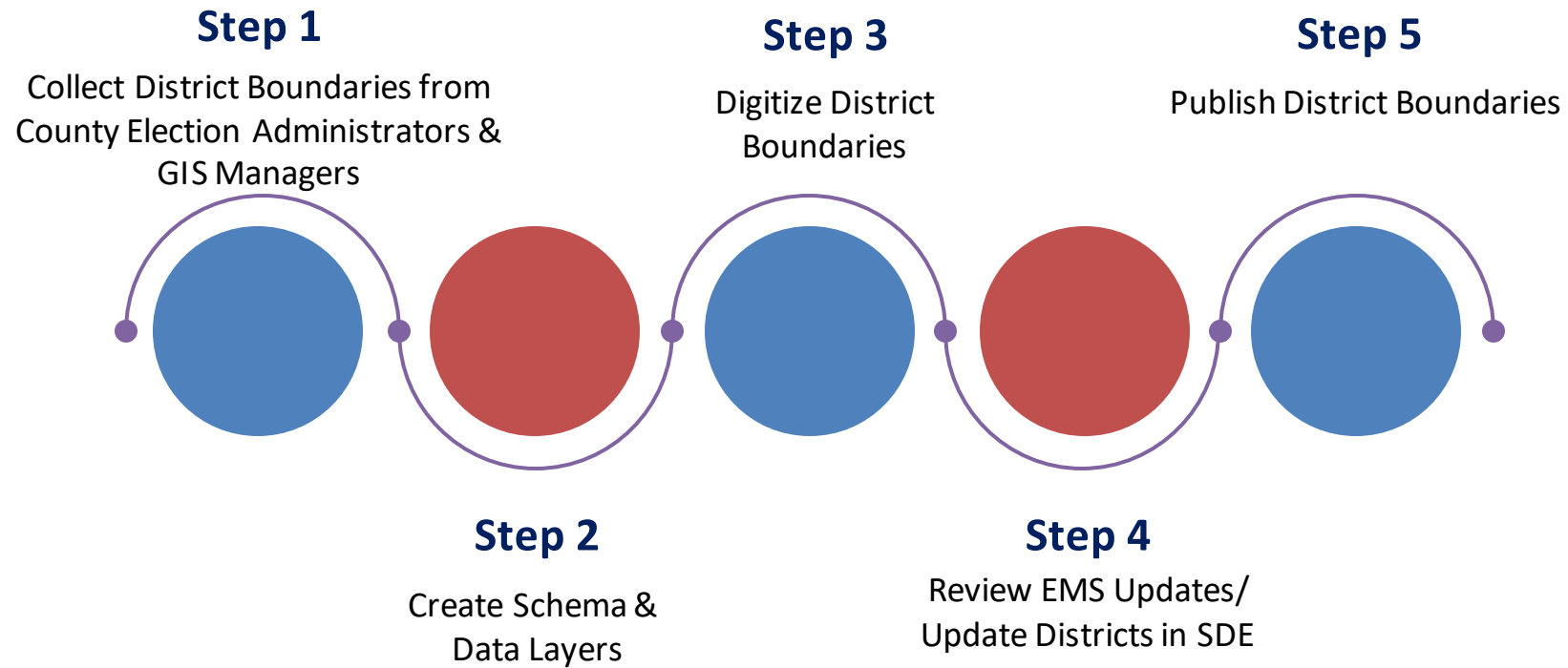
- Missing Golden Valley and Treasure

Created Precinct Splits for all counties

- Continue to work with counties to refine their Election Districts and Precinct Split Boundaries



Boundary Update Workflow



Step 5: Publish Boundaries

All Election Districts and Precinct Splits have been published

- Available Statewide and by County
- File Geodatabase, Shapefile, and Web Services
- Current Precinct Splits table

| | | |
|--------------------|---------|---|
| 3/13/2023 11:42 AM | 1482366 | GraniteElectionDistricts.zip |
| 3/13/2023 11:42 AM | 898608 | GraniteElectionDistrictsSHP.zip |
| 3/13/2023 11:36 AM | 43708 | GranitePrecinctSplits.xlsx |
| 3/13/2023 11:43 AM | 98881 | GranitePrecinctSplits.zip |
| 3/13/2023 11:43 AM | 129858 | GranitePrecinctSplitsSHP.zip |
| 2/14/2023 11:50 AM | 133646 | GraniteSplits20230214.zip |

Visit MSDI Boundary Page for: <https://msl.mt.gov/GIS/Boundaries>

- Metadata Records
- Download Links
- Web Services: https://gisservicemt.gov/arcgis/rest/services/MSDI_Framework/Boundaries/MapServer
- Web Maps/Apps Gallery

Data Layers are also discoverable in the Data List:

- <https://msl.mt.gov/GIS/DataList>

Redistricting

Following a federal decennial census new Congressional and Legislative Districts must be redrawn:

- Congressional Districts adopted: November 12, 2021
- Legislative House & Senate Districts adopted: February 23, 2023

<https://mtredistricting.gov/>

Once redistricting is complete each county has 45 days to review their Voting Precincts to make sure they conform to the new legislative districts. Precincts should equalize the number of electors as nearly as possible

County Commissioner Districts should also be reviewed to be as compact and equal in population and area as possible following a decennial census

Redistricting Timeline

Final Approval of County Voting Precincts by April 8

- Sent to SOS
- Send to MSL as soon as possible
- Resolutions, GIS Data Layers, Maps

School Elections in May (with current legislative districts (2014-2022) and voting precincts

Add New House/Senate Districts (2024-2032) to ElectMT in June

Election Administrators will update Precincts in ElectMT in June

- In Test first, than Production

MSL will create Precinct Split boundaries with new Precincts in June

- Send for review to Counties
- Send to SOS to update them in TotalAddress

Geo-Enabled Elections Hub Updates

Boundary Page Now has a Calendar with Update Schedule

The Hub Site now has Redistricting Info:

- Links to Montana Code Annotated
- Interactive Maps/Apps
- Download Data Layers
- Access Population Analysis Reports
- View and Print Maps
- Video describing resources
- ArcGIS Pro Tools and Project
- List of Redistricting Software
- List of GIS Contractors from MAGIP

Montana State Library's Geo-Enabled Elections Information Hub About Addressing Boundaries Redistricting Status Map

Montana Geo-Enabled Elections

The Montana Secretary of State's Office (SOS) and the Montana State Library (MSL) are Geo-Enabling Montana's elections by implementing GIS into existing election processes. The SOS is employing a new election management system (EMS) called ElectMT, which includes a GIS and mapping component called TotalAddress, with the goal to ensure that every Montana voter is accurately mapped and assigned to the correct Precinct Split.

The Montana State Library (MSL) oversees the development and maintenance of two Montana Spatial Data Infrastructure (MSDI) Themes that will be crucial to the implementation of this new GIS-based system: [Administrative Boundaries](#) and [Structures & Addresses](#).

Scroll down to view the current voting Precinct Split status by county. A Precinct Split defines the smallest area in which the same combination of election districts are contested; essentially a ballot. Each Precinct Split represents a unique combination of election districts within a County Voting Precinct. Learn more about the construction of election districts and precinct splits under the [Boundaries Tab](#).

After every federal decennial census, the Districting and Apportionment Commission is responsible for drawing new Congressional and Legislative Districts. Find resources for updating election districts under the [Redistricting Tab](#).

Address points are a required dataset for Next Generation 9-1-1, broadband internet mapping, and now elections management. View the [Addressing Tab](#) to learn more about how the Montana State Library is partnering with the Montana Secretary of State's Office to geocode existing registered voters and provide statewide address point data that county elections administrators can use to verify addresses for new voters.

<https://geoenabled-elections-montana.hub.arcgis.com/pages/redistricting>

03
Geoprocessing Solutions
Caroline Psaltis



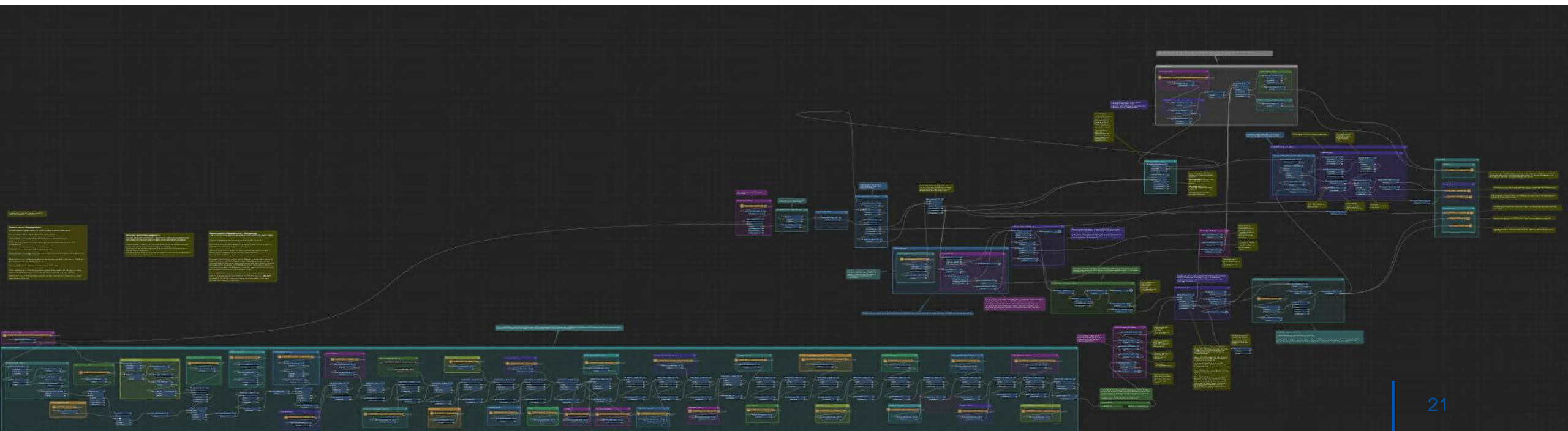
Precinct Splits Generation Requirements

| CountyC | CountyName | PrecinctPart | PrecinctName | SplitCo | House | Statew | Senate | County | Congressional | Supreme_Cour_Justice | Public_Service_Commission | Judicial | Commissioner | School | Fire | SoilConservation | City_Town | Ward | Rural |
|---------|------------|--------------------|------------------|---------|-------------------|---------|--------------------|--------|-------------------|-----------------------|---|----------------------|--------------------------|--------------|------|-------------------|------------------|------------------|-------|
| 03 | Blaine | NO CHINOOK 13-33 - | NO CHINOOK 13-33 | 01 | House District 33 | Montana | Senate District 17 | Blaine | 2ND CONGRESSIONAL | SUPREME COURT JUSTICE | Public Service Commissioner, District 1 | Judicial District 17 | COMMISSIONER DISTRICT #3 | SCHOOL 10 | | SOIL CONSERVATION | | | RURAL |
| 03 | Blaine | SO CHINOOK 10-32 - | SO CHINOOK 10-32 | 02 | House District 32 | Montana | Senate District 16 | Blaine | 2ND CONGRESSIONAL | SUPREME COURT JUSTICE | Public Service Commissioner, District 1 | Judicial District 17 | COMMISSIONER DISTRICT #2 | SCHOOL 14 | | SOIL CONSERVATION | | | RURAL |
| 03 | Blaine | TURNER 1-33 - 06 | TURNER 1-33 | 06 | House District 33 | Montana | Senate District 17 | Blaine | 2ND CONGRESSIONAL | SUPREME COURT JUSTICE | Public Service Commissioner, District 1 | Judicial District 17 | COMMISSIONER DISTRICT #3 | SCHOOL 06 | | SOIL CONSERVATION | | | RURAL |
| 03 | Blaine | HAYS 15-32 - 03 | HAYS 15-32 | 03 | House District 32 | Montana | Senate District 16 | Blaine | 2ND CONGRESSIONAL | SUPREME COURT JUSTICE | Public Service Commissioner, District 1 | Judicial District 17 | COMMISSIONER DISTRICT #1 | SCHOOL 50L | | SOIL CONSERVATION | | | RURAL |
| 03 | Blaine | SO CHINOOK 10-32 - | SO CHINOOK 10-32 | 05 | House District 32 | Montana | Senate District 16 | Blaine | 2ND CONGRESSIONAL | SUPREME COURT JUSTICE | Public Service Commissioner, District 1 | Judicial District 17 | COMMISSIONER DISTRICT #2 | SCHOOL 12H | | SOIL CONSERVATION | | | RURAL |
| 03 | Blaine | HARLEM 9-32 - 01 | HARLEM 9-32 | 01 | House District 32 | Montana | Senate District 16 | Blaine | 2ND CONGRESSIONAL | SUPREME COURT JUSTICE | Public Service Commissioner, District 1 | Judicial District 17 | COMMISSIONER DISTRICT #3 | SCHOOL 12B | | SOIL CONSERVATION | | | RURAL |
| 03 | Blaine | CHINOOK 11-33 - 02 | CHINOOK 11-33 | 02 | House District 33 | Montana | Senate District 17 | Blaine | 2ND CONGRESSIONAL | SUPREME COURT JUSTICE | Public Service Commissioner, District 1 | Judicial District 17 | COMMISSIONER DISTRICT #2 | SCHOOL 10 | | SOIL CONSERVATION | CITYWIDE CHINOOK | CITY COUNCIL WAF | |
| 03 | Blaine | SO CHINOOK 10-32 - | SO CHINOOK 10-32 | 01 | House District 32 | Montana | Senate District 16 | Blaine | 2ND CONGRESSIONAL | SUPREME COURT JUSTICE | Public Service Commissioner, District 1 | Judicial District 17 | COMMISSIONER DISTRICT #2 | SCHOOL 10 | | SOIL CONSERVATION | | | RURAL |
| 03 | Blaine | NO CHINOOK 13-33 - | NO CHINOOK 13-33 | 02 | House District 33 | Montana | Senate District 17 | Blaine | 2ND CONGRESSIONAL | SUPREME COURT JUSTICE | Public Service Commissioner, District 1 | Judicial District 17 | COMMISSIONER DISTRICT #3 | SCHOOL 17 | | SOIL CONSERVATION | | | RURAL |
| 03 | Blaine | CHINOOK 11-33 - 01 | CHINOOK 11-33 | 01 | House District 33 | Montana | Senate District 17 | Blaine | 2ND CONGRESSIONAL | SUPREME COURT JUSTICE | Public Service Commissioner, District 1 | Judicial District 17 | COMMISSIONER DISTRICT #2 | SCHOOL 10 | | SOIL CONSERVATION | CITYWIDE CHINOOK | CITY COUNCIL WAF | |
| 03 | Blaine | TURNER 1-33 - 01 | TURNER 1-33 | 01 | House District 33 | Montana | Senate District 17 | Blaine | 2ND CONGRESSIONAL | SUPREME COURT JUSTICE | Public Service Commissioner, District 1 | Judicial District 17 | COMMISSIONER DISTRICT #3 | SCHOOL 43 | | SOIL CONSERVATION | | | RURAL |
| 03 | Blaine | HAYS 15-32 - 02 | HAYS 15-32 | 02 | House District 32 | Montana | Senate District 16 | Blaine | 2ND CONGRESSIONAL | SUPREME COURT JUSTICE | Public Service Commissioner, District 1 | Judicial District 17 | COMMISSIONER DISTRICT #1 | SCHOOL 12B | | SOIL CONSERVATION | | | RURAL |
| 03 | Blaine | HAYS 15-32 - 01 | HAYS 15-32 | 01 | House District 32 | Montana | Senate District 16 | Blaine | 2ND CONGRESSIONAL | SUPREME COURT JUSTICE | Public Service Commissioner, District 1 | Judicial District 17 | COMMISSIONER DISTRICT #1 | SCHOOL 50H | | SOIL CONSERVATION | | | RURAL |
| 03 | Blaine | SO CHINOOK 10-32 - | SO CHINOOK 10-32 | 03 | House District 32 | Montana | Senate District 16 | Blaine | 2ND CONGRESSIONAL | SUPREME COURT JUSTICE | Public Service Commissioner, District 1 | Judicial District 17 | COMMISSIONER DISTRICT #2 | SCHOOL 17 | | SOIL CONSERVATION | | | RURAL |
| 03 | Blaine | HARLEM 8-32 - 04 | HARLEM 8-32 | 04 | House District 32 | Montana | Senate District 16 | Blaine | 2ND CONGRESSIONAL | SUPREME COURT JUSTICE | Public Service Commissioner, District 1 | Judicial District 17 | COMMISSIONER DISTRICT #3 | SCHOOL 12H | | SOIL CONSERVATION | | | RURAL |
| 03 | Blaine | TURNER 1-33 - 02 | TURNER 1-33 | 02 | House District 33 | Montana | Senate District 17 | Blaine | 2ND CONGRESSIONAL | SUPREME COURT JUSTICE | Public Service Commissioner, District 1 | Judicial District 17 | COMMISSIONER DISTRICT #3 | SCHOOL 12H | | SOIL CONSERVATION | | | RURAL |
| 03 | Blaine | TURNER 1-33 - 04 | TURNER 1-33 | 04 | House District 33 | Montana | Senate District 17 | Blaine | 2ND CONGRESSIONAL | SUPREME COURT JUSTICE | Public Service Commissioner, District 1 | Judicial District 17 | COMMISSIONER DISTRICT #3 | SCHOOL 17 | | SOIL CONSERVATION | | | RURAL |
| 03 | Blaine | TURNER 1-33 - 03 | TURNER 1-33 | 03 | House District 33 | Montana | Senate District 17 | Blaine | 2ND CONGRESSIONAL | SUPREME COURT JUSTICE | Public Service Commissioner, District 1 | Judicial District 17 | COMMISSIONER DISTRICT #3 | SCHOOL 12-43 | | SOIL CONSERVATION | | | RURAL |
| 03 | Blaine | HARLEM 8-32 - 06 | HARLEM 8-32 | 06 | House District 32 | Montana | Senate District 16 | Blaine | 2ND CONGRESSIONAL | SUPREME COURT JUSTICE | Public Service Commissioner, District 1 | Judicial District 17 | COMMISSIONER DISTRICT #3 | SCHOOL 12H | | SOIL CONSERVATION | CITYWIDE HARLEM | CITY COUNCIL WAF | |
| 03 | Blaine | BELKNAP 3-32 - 01 | BELKNAP 3-32 | 01 | House District 32 | Montana | Senate District 16 | Blaine | 2ND CONGRESSIONAL | SUPREME COURT JUSTICE | Public Service Commissioner, District 1 | Judicial District 17 | COMMISSIONER DISTRICT #1 | SCHOOL 12B | | SOIL CONSERVATION | | | RURAL |
| 03 | Blaine | SO CHINOOK 10-32 - | SO CHINOOK 10-32 | 04 | House District 32 | Montana | Senate District 16 | Blaine | 2ND CONGRESSIONAL | SUPREME COURT JUSTICE | Public Service Commissioner, District 1 | Judicial District 17 | COMMISSIONER DISTRICT #2 | SCHOOL 67 | | SOIL CONSERVATION | | | RURAL |
| 03 | Blaine | HARLEM 8-32 - 05 | HARLEM 8-32 | 05 | House District 32 | Montana | Senate District 16 | Blaine | 2ND CONGRESSIONAL | SUPREME COURT JUSTICE | Public Service Commissioner, District 1 | Judicial District 17 | COMMISSIONER DISTRICT #3 | SCHOOL 12H | | SOIL CONSERVATION | CITYWIDE HARLEM | CITY COUNCIL WAF | |
| 03 | Blaine | BELKNAP 3-32 - 02 | BELKNAP 3-32 | 02 | House District 32 | Montana | Senate District 16 | Blaine | 2ND CONGRESSIONAL | SUPREME COURT JUSTICE | Public Service Commissioner, District 1 | Judicial District 17 | COMMISSIONER DISTRICT #1 | SCHOOL 12H | | SOIL CONSERVATION | | | RURAL |
| 03 | Blaine | TURNER 1-33 - 05 | TURNER 1-33 | 05 | House District 33 | Montana | Senate District 17 | Blaine | 2ND CONGRESSIONAL | SUPREME COURT JUSTICE | Public Service Commissioner, District 1 | Judicial District 17 | COMMISSIONER DISTRICT #3 | SCHOOL 43-12 | | SOIL CONSERVATION | | | RURAL |

- A table of precinct-splits per county from ElectMT with each district name and type in split.
- Each election district in a county needs to be digitized and/or have its boundary updated to reflect the most up to date information.
- A field in each district layer that matches the name in the precinct-splits table.

Precinct Splits Generation

- Repeatable process – Each county has a workspace and file geodatabase based off of templates
- Easy to update (add/remove) SDE layers for election district overlay (great for redistricting!)
- Now includes voter counts per precinct split to help QC
- Generates precinct splits along with address layers to help QC
- Helps ID any missing precinct splits and voter address that don't match a precinct split for county

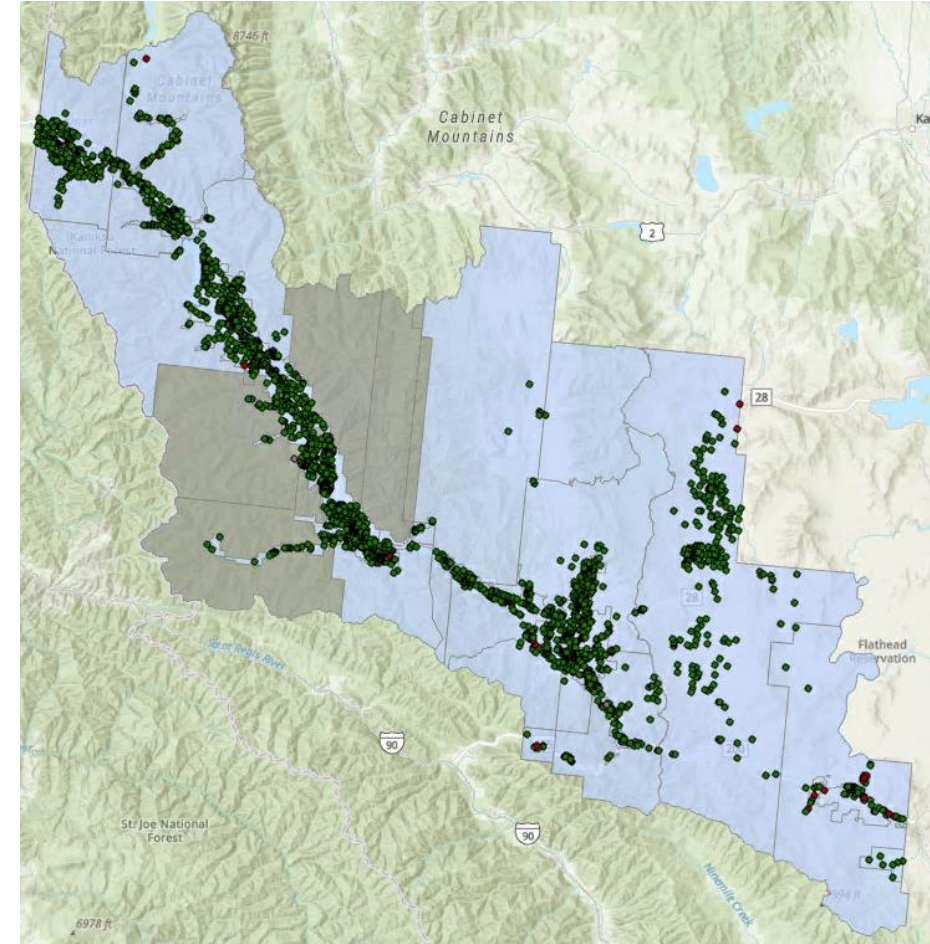
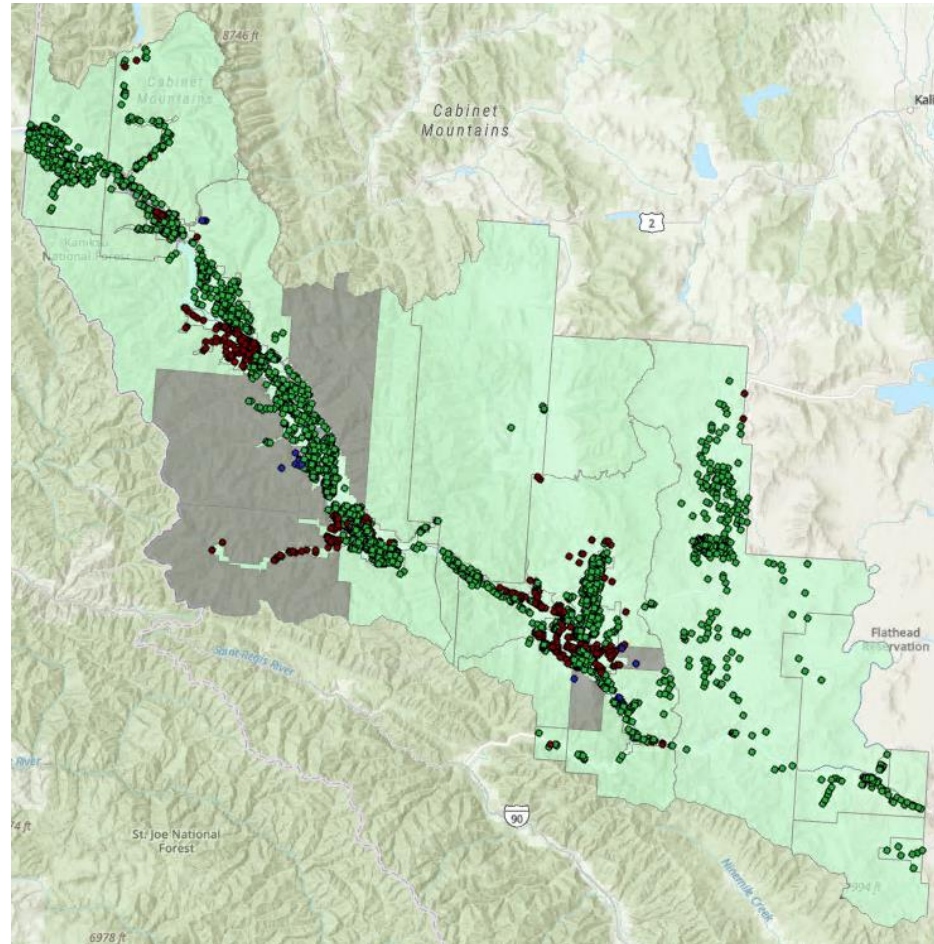


QC Process – Sanders Example

2022

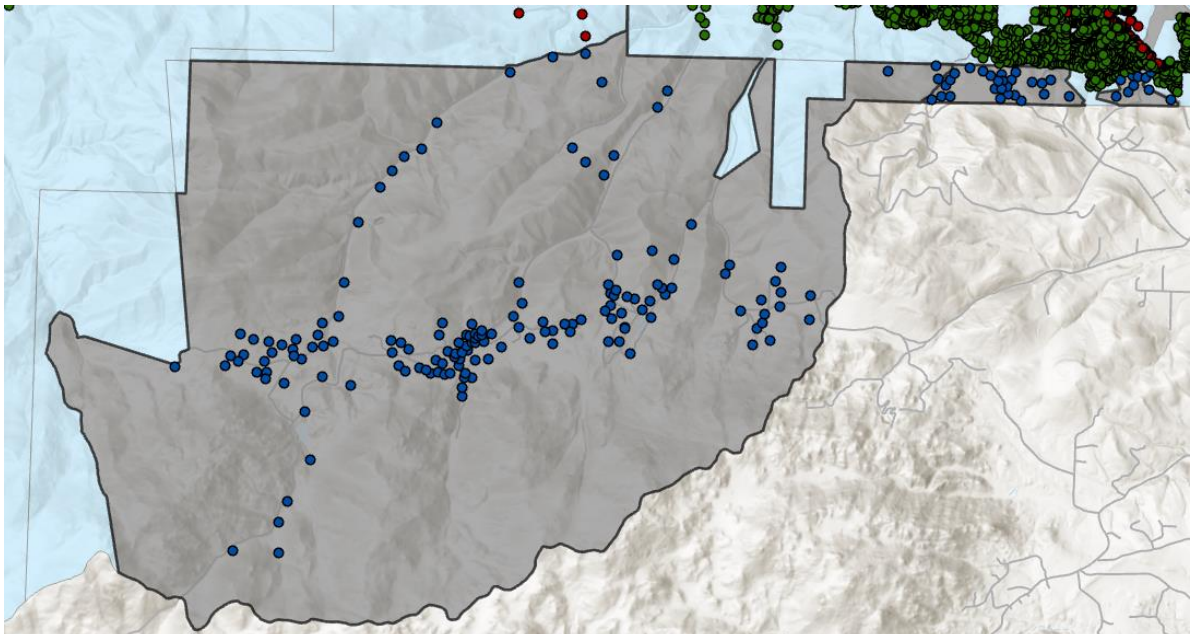
2023

| | 2022 | 2023 |
|--------------------|------|------|
| Total Splits | 50 | 47 |
| Splits Found (FME) | 39 | 47 |
| Missing Splits | 11 | 0 |

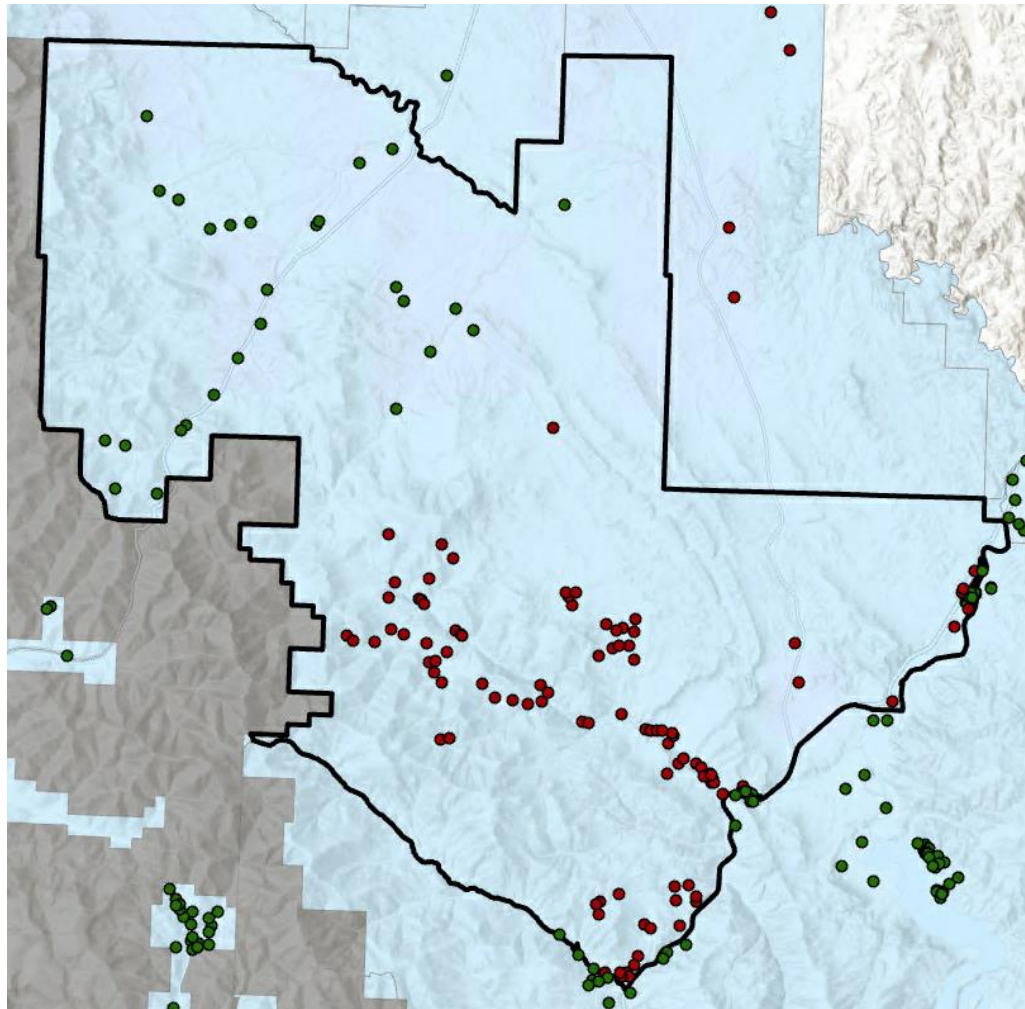


QC Process Cont.

- Voter Address in Polygon with No Split Assigned
- Voter Address in Polygon with Matching Split
- Voter Address in Polygon with Not Matching Split

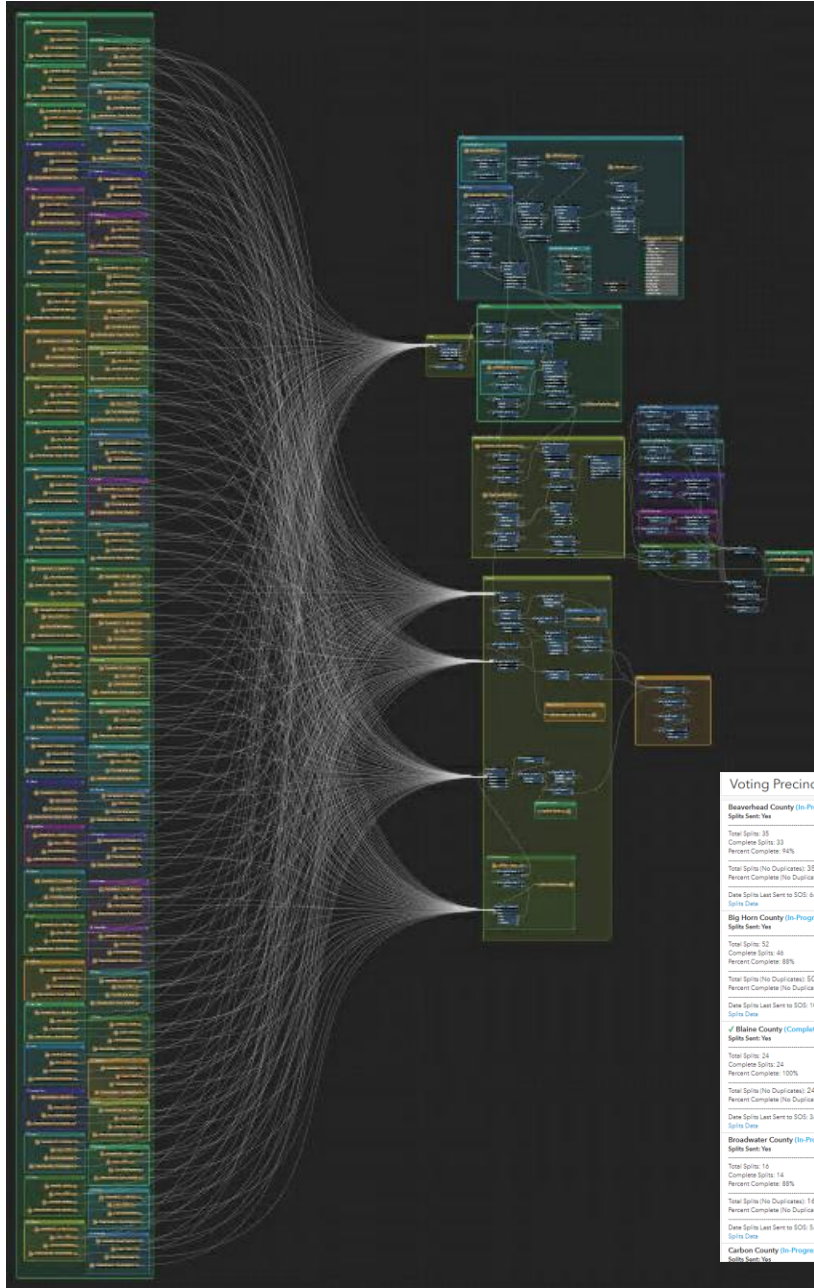


Voter addresses in polygon with unassigned split (has since been corrected)



Duplicate split assignment in a split polygon (has since been corrected)

Statewide Splits Update



```
#gdb names
gdb2 = "MTCountySplits.gdb"

##Import, overwrite, and append MTCountySplits feature class
gdb2Path = os.path.join(folder2,gdb2)
print(gdb2)
env.workspace = gdb2Path
env.overwriteOutput = True

#stop geoprocessing from metadata
if arcpy.GetLogMetadata():
    arcpy.SetLogMetadata(False)

arcpy.FeatureClassToFeatureClass_conversion(original12,gdb2Path,fc2)
print("MTCountySplits has been imported to MTCountySplitsGDB.")

outFile = gdb2Path + '.zip'
zipFileGeodatabase(gdb2Path,outFile)

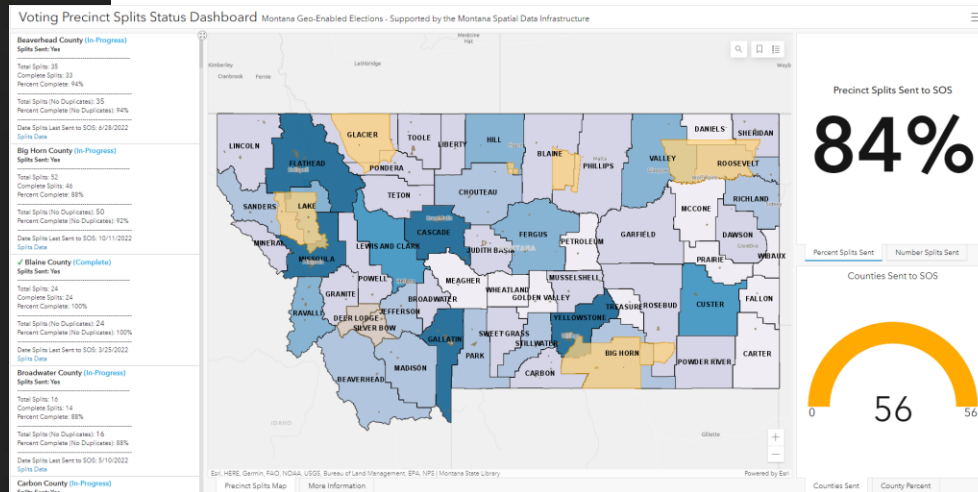
county_properties = {'title':'CountySplitInfo',
                    'tags': 'geoenabled elections, montana',
                    'type':'File Geodatabase',
                    'overwrite':'True'}

county_gdb = gis.content.add(county_properties,gdb2Path+'.zip')
county_item = gis.content.get(item_ID2)
countyLayer = county_item.layers[0]
print(countyLayer.properties.name)

countyLayer.append(item_id=county_gdb.id,
                  upload_format='filegdb',
                  source_table_name="MTCountySplits",
                  upsert=True,
                  skip_inserts=True,
                  upsert_matching_field='NAME',
                  update_geometry=False)

county_gdb.delete()
```

- Creates statewide splits layer and address point layer for QCing and FTP site
- Update precinct splits and layers on AGOL that are behind Splits Status Dashboard



Statistics

Number of Counties Submitted to SOS

56 of 56 (100%)
47 of 56 (~84%)

Number of Unique Districts

2,315
2,209

Total Number of Election District Types

33
33

Number of Splits Sent to SOS

2555 of 3040 (~84%)
2113 of 2950 (~72%)

County with the most Splits

Missoula - 333
Flathead - 299

County with the fewest splits

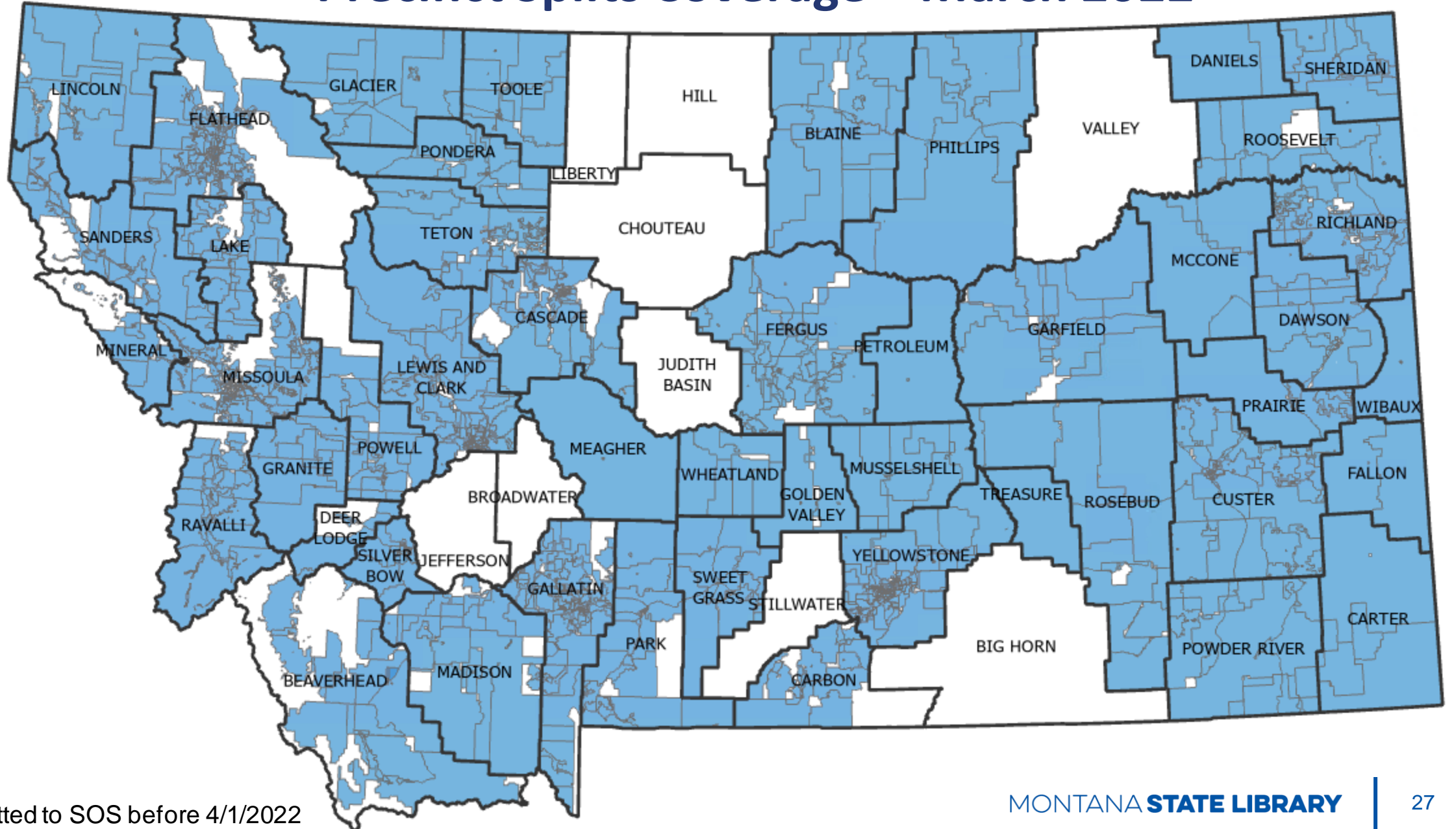
Treasure/Meagher - 2
Treasure/Meagher - 2

Statistics Cont.

| March 2023 | |
|------------------------------|---------|
| Splits Found (FME) | 2,555 |
| Total Splits | 3,040 |
| Total Voters (ElectMT) | 672,342 |
| Voters not in Assigned Split | 16,020 |

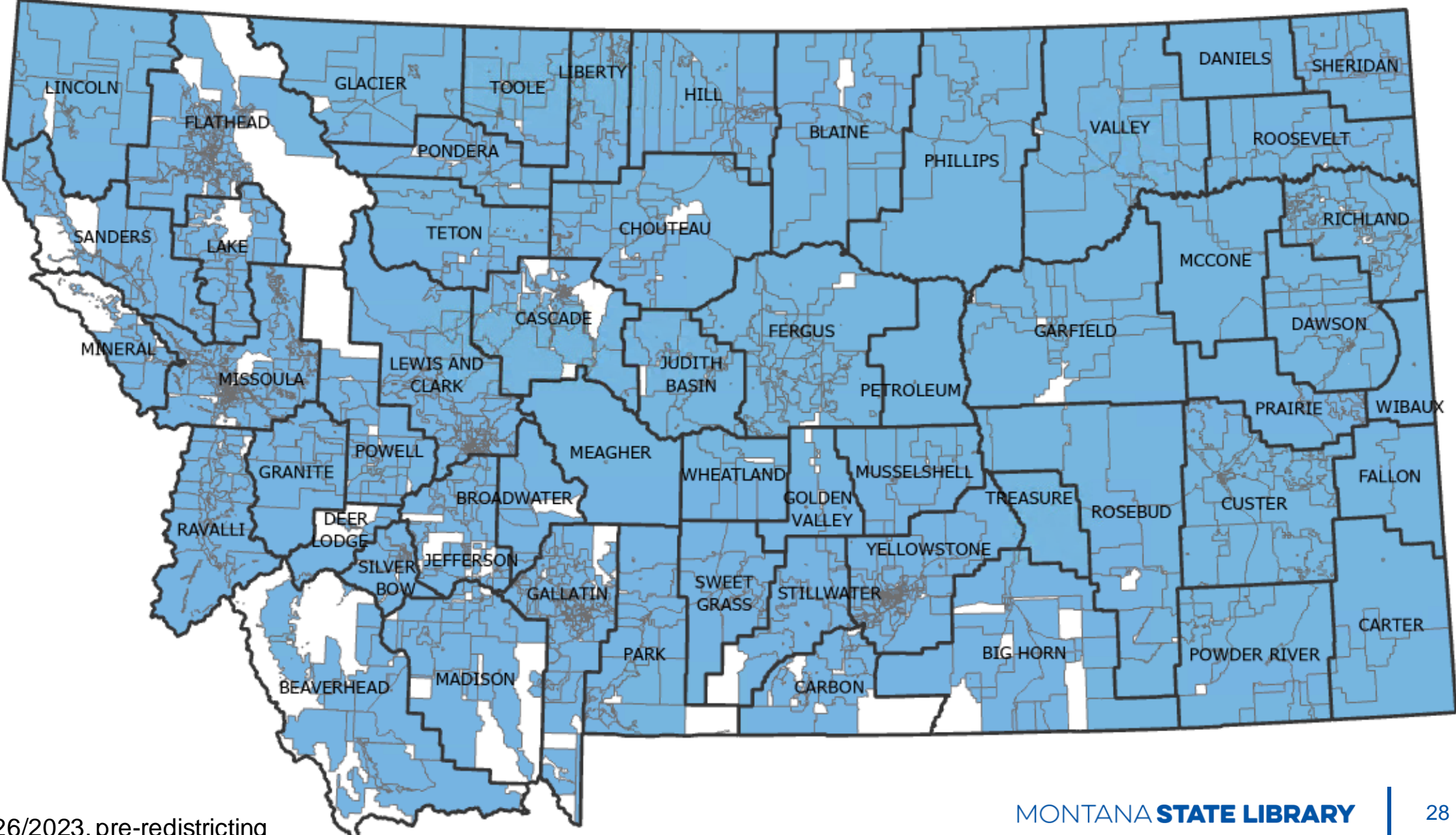
| March 2022 | |
|------------------------------|---------|
| Splits Found (FME) | 2,113 |
| Total Splits | 2,950 |
| Total Voters (ElectMT) | 647,083 |
| Voters not in Assigned Split | 73,196 |

Precinct Splits Coverage – March 2022



* Submitted to SOS before 4/1/2022

Precinct Splits Coverage – March 2023



*As of 3/26/2023, pre-redistricting

04

Addressing for NG9-1-1 and Geo-Enabled Elections

Michael Fashoway



Address Data Requirements

- Complete address point data for entire County, including incorporated cities/towns
- Standardized GIS address point data (to NENA NG9-1-1 standards), including Postal Community names and ZIP Codes
 - NENA NG9-1-1 standardized data can be easily reformatted to USPS Pub28 standard that elections needs
- Address point located on structure/rooftop



Geocoding Voter Addresses Review

- Prior to go-live with the ElectMT system:
 - SOS provided MSL with addresses of all registered voters
 - MSL geocoded voters addresses
 - MSL backfilled the remaining non-voter addresses
 - Addresses reformatted to USPS Pub28 standard
 - Duplicate addresses removed
 - SOS loaded addresses into TotalAddress
- Several iterations of this process were done in 2021 and 2022
- Processes will be different now going forward

Voter Address Maintenance

- TotalAddress will be validated/updated twice a year
 - January/February
 - June/July
- New update process will be change detection between TotalAddress and GIS (rather than a complete re-geocoding of the voter addresses)
 - This will catch changes that were made in TotalAddress but not in GIS, and visa versa
- Any differences will need to be reviewed
 - Therefore, minimizing those differences will save work in the end

Voter Address Maintenance

- In the meantime, Elections Administrators and those assigning new addresses and maintaining GIS address points will need to coordinate
 - As new addresses are assigned, make sure they are added to both GIS and TotalAddress, with attention paid to exactly match the Lat/Long and address
 - As issues are discovered with existing addresses, either the location or with the address itself, make sure updates are made to both TotalAddress and GIS
- A number of counties are using ArcGIS Online web maps/applications to share their most current address data for elections staff to reference

05
Grant Opportunities
Erin Fashoway



MLIA Grant Program

Annual Grant Program fund GIS Data Projects to meet the purpose implementing goals of the land information plan.

Eligible Grant Recipients:

- State Agencies (Includes Montana University)
- Local Governments/Agencies
- Tribal Governments or Tribal Entities

Please direct all grant program questions to MLIAGrants@mt.gov

FY2024 Land Information Plan Grant Priorities

Tier 1 Priorities - Create or update datasets and develop workflows for the purpose of continued participation in the Montana Spatial Data Infrastructure or other statewide data collection initiatives listed below:

- a. Develop GIS Information to Support Next Generation 9-1-1 (NG9-1-1) – Development of GIS data that are National Emergency Number Association (NENA) Standard Compliant.
- b. Montana Spatial Data Infrastructure Improvement to Cadastral and Administrative Boundaries Themes
- c. Integrating GIS into the Planning and Preparation for Geo-Enabled Elections.

MLIA Grant Program Timeline

| | |
|---|------------------------------|
| Grant criteria/application published | January 15 |
| Grant application received by the MSL deadline | before 5:00pm on February 15 |
| Grant application revision deadline | March 1 |
| Grant applications prioritized for funding by MSL/ MLIAC Grant Subcommittee | by May 1 |
| Grants applications funding approval by Montana State Library Commission | by May 15 |
| Start of grant year | July 1 |
| Quarterly status reports | as negotiated |
| Close of grant year | June 30 |

MLIA Grant Projects Awarded for Current Grant Year - FY2023

| Rank | Applicant | Identified Priority | Awarded |
|------|-------------------|---|----------|
| 1 | Missoula County | Build GIS Capacity: Local Information Needs | \$43,703 |
| 2 | Butte-Silver Bow | Support NG 9-1-1 | \$43,520 |
| 3 | Beaverhead County | Support NG 9-1-1 | \$38,500 |
| 4 | Stillwater County | Improve Land Records: PLSS | \$21,000 |
| 5 | McCone County | Improve Land Records: PLSS | \$45,000 |
| 6 | Meagher County | Support NG 9-1-1 | \$26,000 |
| 7 | Teton County | Geo-Enabled Elections | \$16,000 |
| 8 | Custer | Support NG 9-1-1 | \$16,277 |

Funding Opportunity through Montana Secretary of State's Help America Vote Act (HAVA) Funding.

**Funding can be used for development of necessary GIS Data
Layers to Support County's Geo-Enabled Elections Efforts.**

**For More Information:
Stuart Fuller - sfuller@mt.gov**

Contact Information

Hub Site - <https://geoenabled-elections-montana.hub.arcgis.com/>

Project – GeoEnabledElections@mt.gov

Erin Fashoway – efashoway@mt.gov

Michael Fashoway – mfashoway@mt.gov

Meghan Burns – mburns2@mt.gov

Caroline Psaltis – cpsaltis@mt.gov

Thank you!

