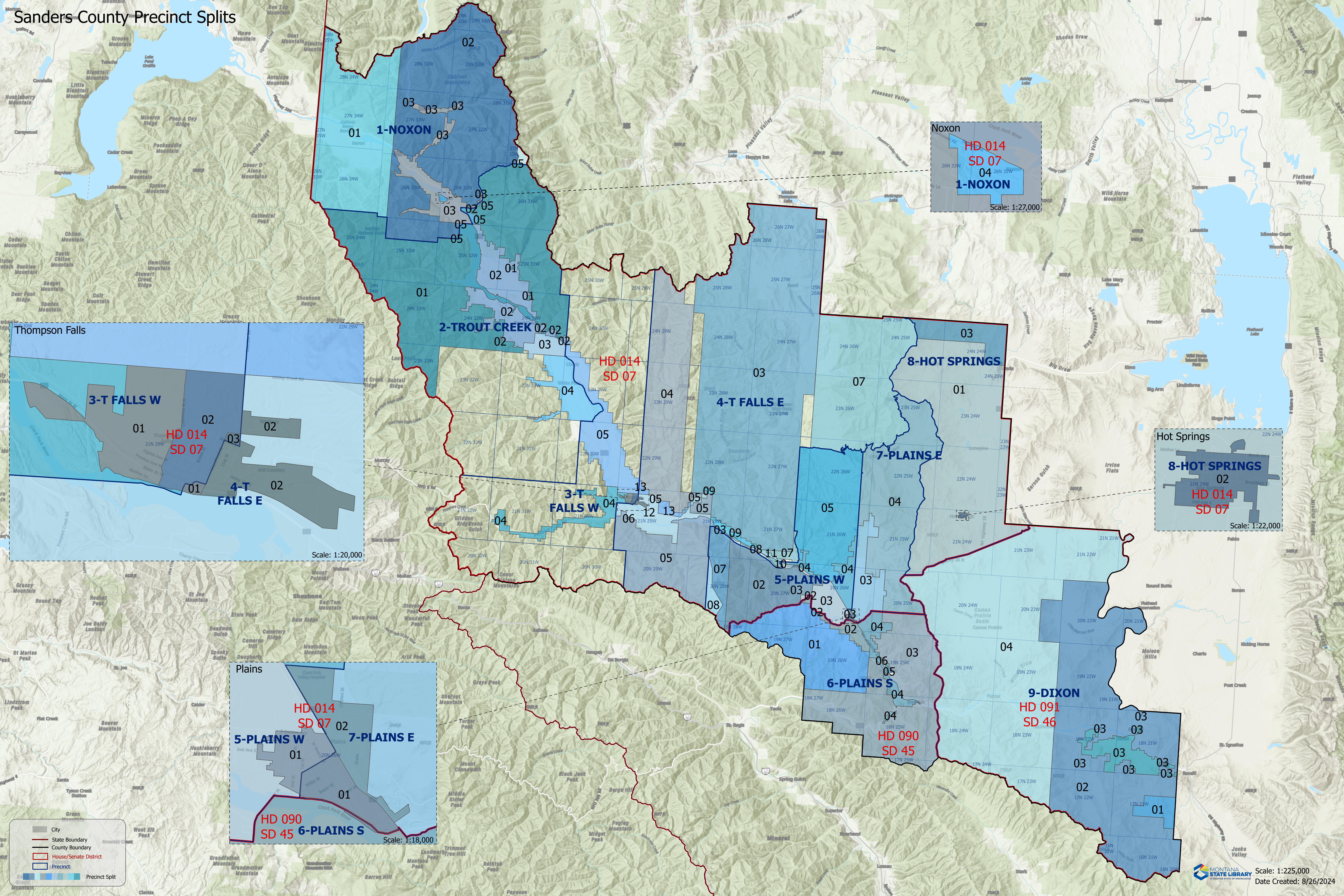


# Sanders County Precinct Splits



Noxon  
HD 014  
SD 07  
04  
1-NOXON  
Scale: 1:27,000

Hot Springs  
8-HOT SPRINGS  
02  
HD 014  
SD 07  
Scale: 1:22,000

Thompson Falls  
3-T FALLS W  
01  
HD 014  
SD 07  
02  
03  
02  
01  
4-T FALLS E  
02  
Scale: 1:20,000

Plains  
5-PLAINS W  
01  
02  
7-PLAINS E  
01  
HD 090  
SD 45  
6-PLAINS S  
Scale: 1:18,000

- City
- State Boundary
- County Boundary
- House/Senate District
- Precinct
- Precinct Split