

Using the Montana State Library's Geocoding Web Service

Note: these directions were developed using ArcGIS 10.3 and last updated on 10/1/15. If you are using a different version of ArcGIS, some of the steps might have slight differences.

Connecting to a web service through Esri's ArcCatalog/ArcMap

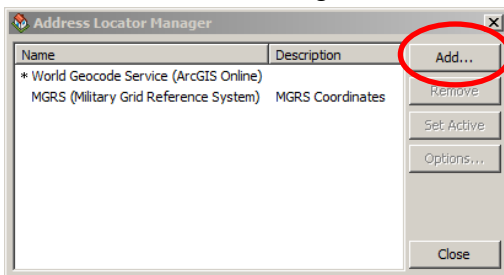
1. In ArcMap: Open the ArcCatalog window. Expand *GIS Servers*
In ArcCatalog: In the Catalog Tree expand *GIS Servers*
2. Double click on *Add ArcGIS Server* connection
3. Take first default: *Use GIS Services*
4. Click Next
5. Enter the following URL into the Internet Server URL text box: ***http://gisservicemt.gov/arcgis/services/***
6. Click Finish
7. An "arcgis on gisservicemt.gov (user)" connection will be added to your connections under GIS Servers (double click this to open a connection).
 - The Montana geocoding service is located in the *MSL* folder
 - (Note: MSDI Framework services are located in the *MSDI_Framework* folder)

Use the geocoding services with the Geocoding Toolbar in ArcMap

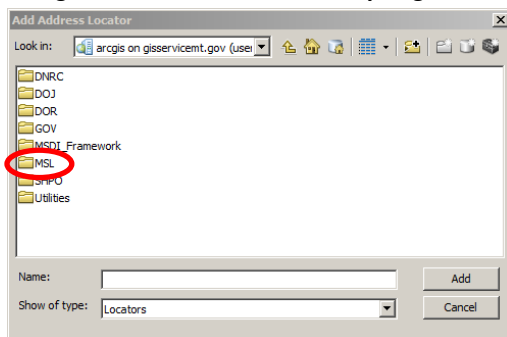
1. Open an ArcMap
2. Add the Geocoding toolbar if it is not currently added. Customize > Toolbars > Geocoding
3. On the Geocoding Toolbar, expand the left the drop down menu. Choose <Manage Address Locators...>



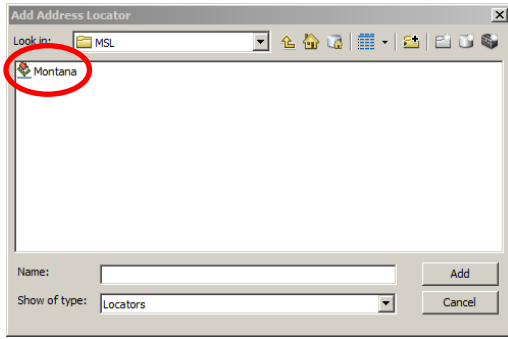
4. In the Address Locator Manager window click Add.



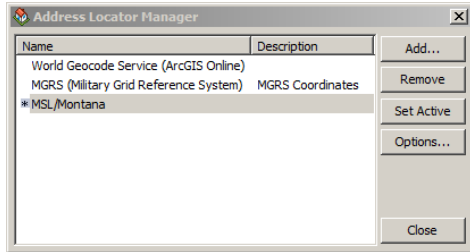
5. Navigate to the connection to ***http://gisservicemt.gov/arcgis/services/*** added in the first section, then to the *MSL* folder.



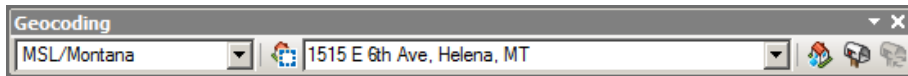
- Select the Montana locator, then click Add



- The MSL/Montana locator is now in the Address Locator Manager window. Make sure it is highlighted in blue by clicking on it and close the window.

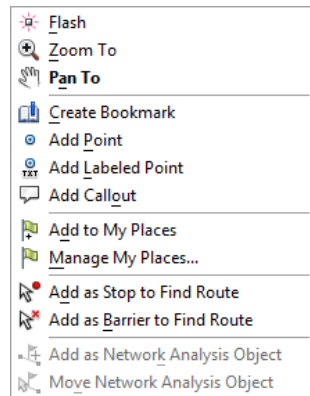


- Type in the following address into the box on the toolbar: **“1515 E 6th Ave, Helena, MT”** and hit the Enter key.



You should see a yellow text box appear (for a moment) under the toolbar that says “Found: 1515 E 6TH AVE, HELENA, MT, 59601”. This indicates the geocoder was able to find a match for the address and displays the standardized address. Note: you can get the yellow text box to reappear by placing your cursor over the address in the toolbar.

- Right click on the address on the toolbar and note the options available in the context menu.



- To geocode more than one address from a file (batch geocoding), click on the Geocode Addresses button, or use the Geocode Addresses tool in ArcToolbox.

