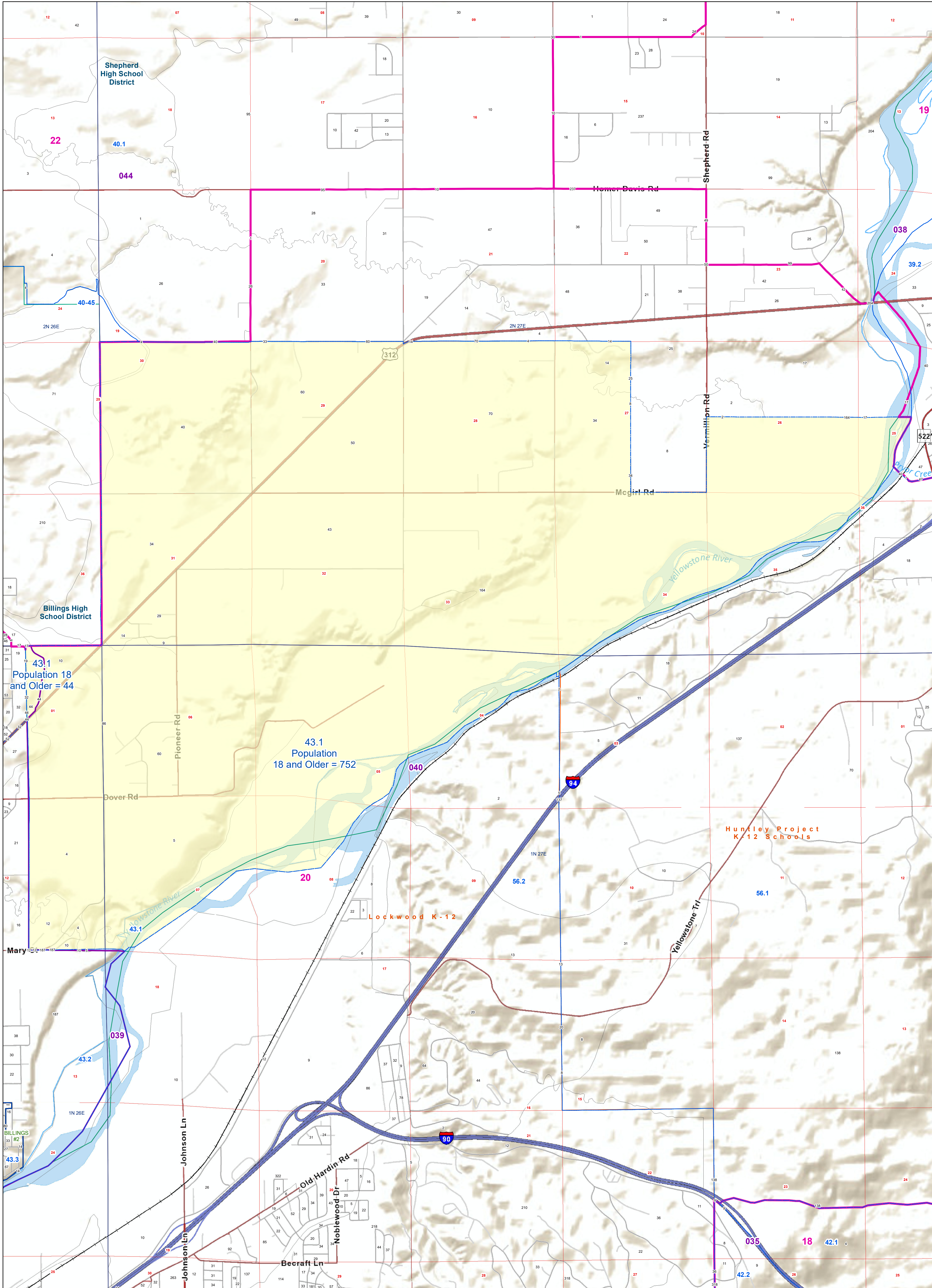


# Yellowstone County: 43.1 Voting Precincts and Legislative Districts



- Voting Precincts
- Tribal Nations Reservations
- 2020 Census Blocks with Population 18 and Older Labeled
- Senate
- Secondary School Districts
- Township Boundary
- House
- Elementary School Districts
- Section Boundary
- Incorporated Cities and Towns
- Unified (K-12) School Districts
- Wards



Voting Precincts  
 Montana State Library  
 Created on 3/13/2023  
 Meghan Burns | GeoEnabledElections@mt.gov  
<https://geoenabled-elections-montana.hub.arcgis.com/>