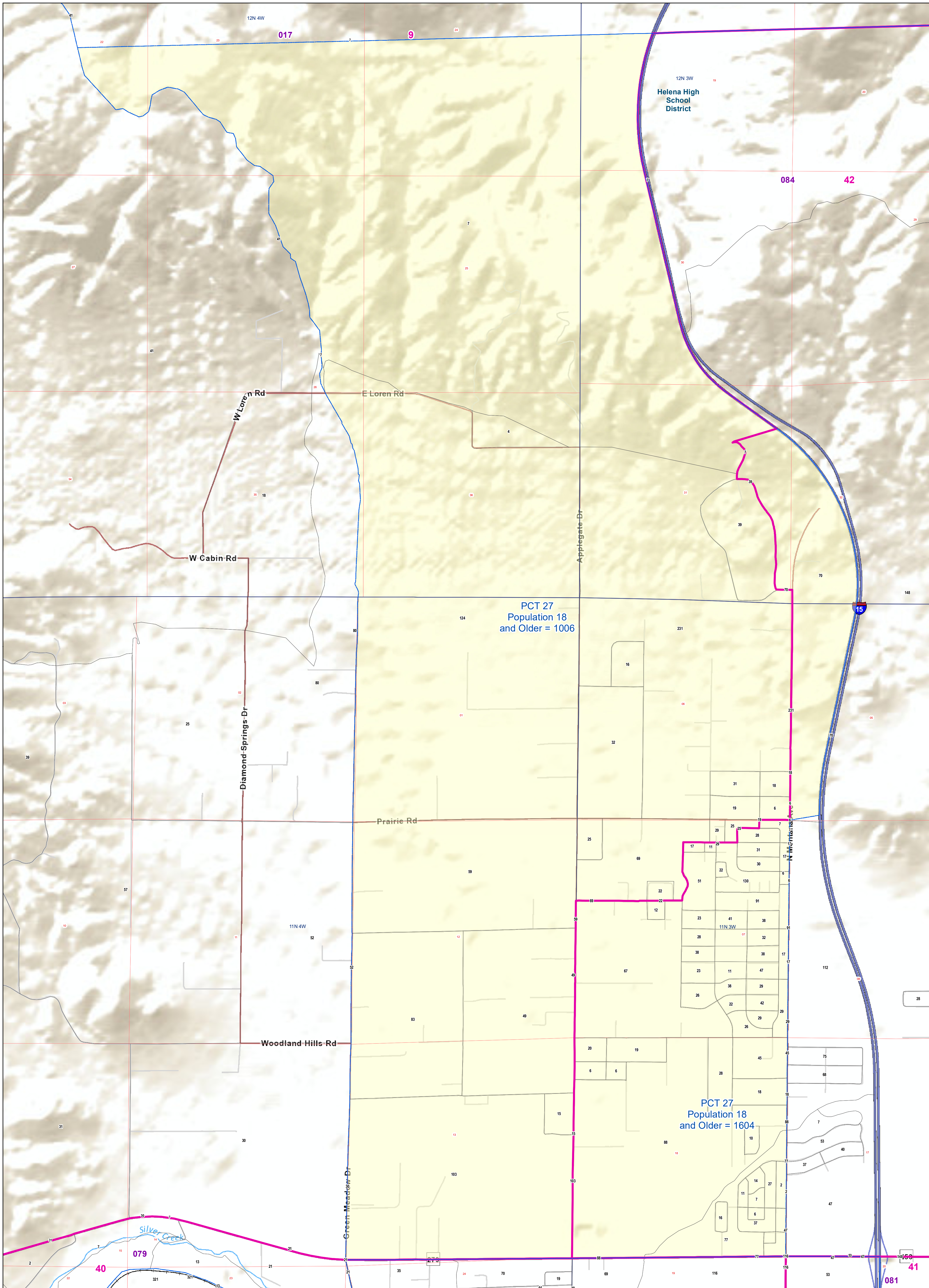
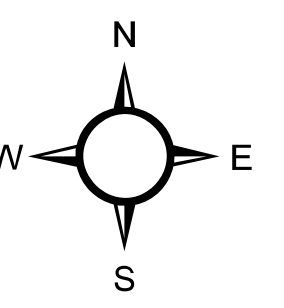


# Lewis and Clark County: PCT 27

## Voting Precincts and Legislative Districts



- Voting Precincts
- Tribal Nations Reservations
- 2020 Census Blocks with Population 18 and Older Labeled
- Senate
- Unified (K-12) School Districts
- Township Boundary
- House
- Secondary School Districts
- Section Boundary
- Incorporated Cities and Towns
- Elementary School Districts
- Wards

