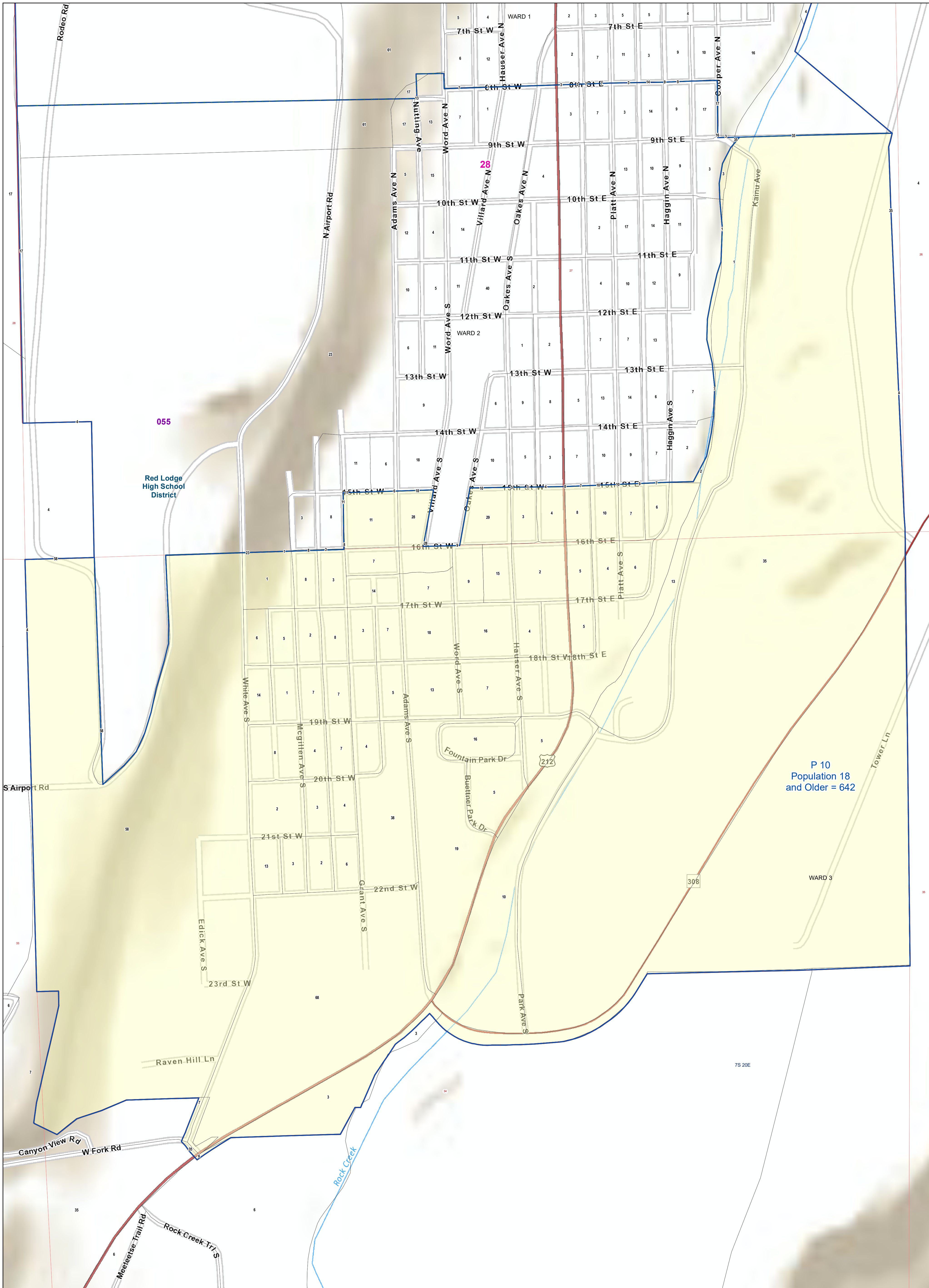


# Carbon County: P 10 Voting Precincts and Legislative Districts



055

Red Lodge High School District

28

P 10  
Population 18  
and Older = 642

- Voting Precincts
- Tribal Nations Reservations
- 2020 Census Blocks with Population 18 and Older Labeled
- Senate
- Unified (K-12) School Districts
- Township Boundary
- House
- Secondary School Districts
- Incorporated Cities and Towns
- Elementary School Districts
- Section Boundary
- Wards



Voting Precincts  
Montana State Library  
Created on 3/12/2023  
Meghan Burns | GeoEnabledElections@mt.gov  
<https://geoenabled-elections-montana.hub.arcgis.com/>