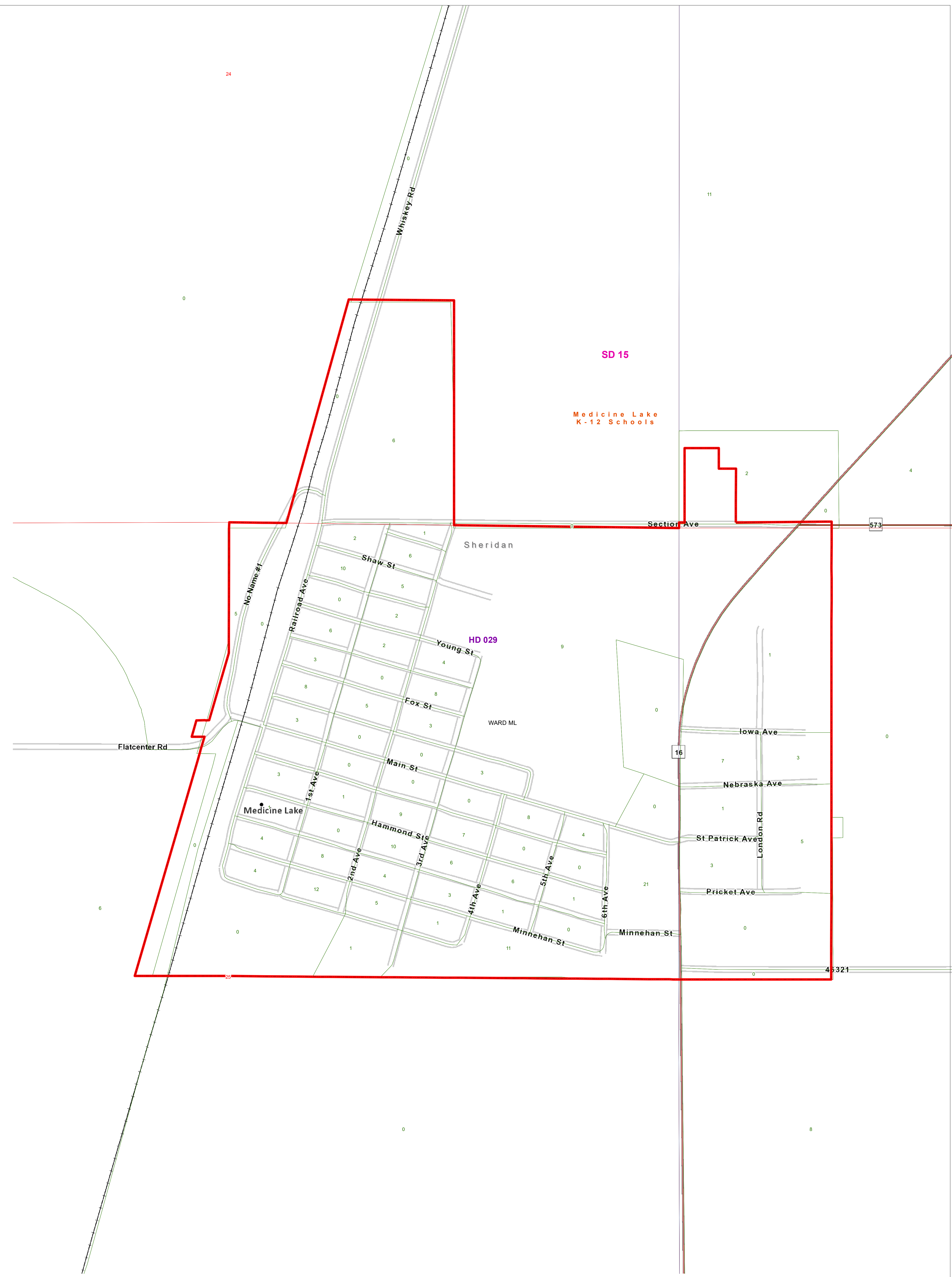


# County Commissioner Districts with 2020 Census Population Medicine Lake, Sheridan County



- |                               |                                 |                               |   |
|-------------------------------|---------------------------------|-------------------------------|---|
| County Commissioner Districts | Tribal Nations Reservations     | Incorporated Cities and Towns | 2020 Census Blocks with Total Population Labeled in Green |
| Voting Precincts              | Secondary School Districts      | Wards                         | Township Boundary   |
| Senate                        | Elementary School Districts     | Sections                      |   |
| House                         | Unified (K-12) School Districts |                               |   |



Voting Precincts  
 Montana State Library  
 Created on 3/14/2023  
 Meghan Burns | [GeoEnabledElections@mt.gov](mailto:GeoEnabledElections@mt.gov)  
<https://geoenabled-elections-montana.hub.arcgis.com/>