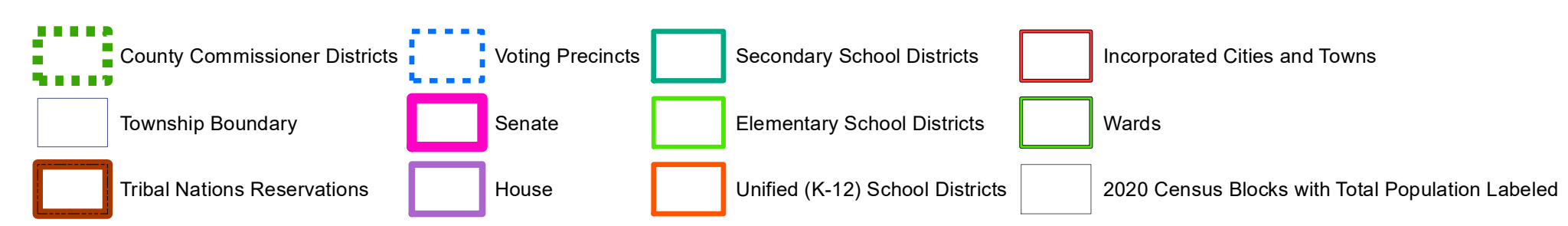
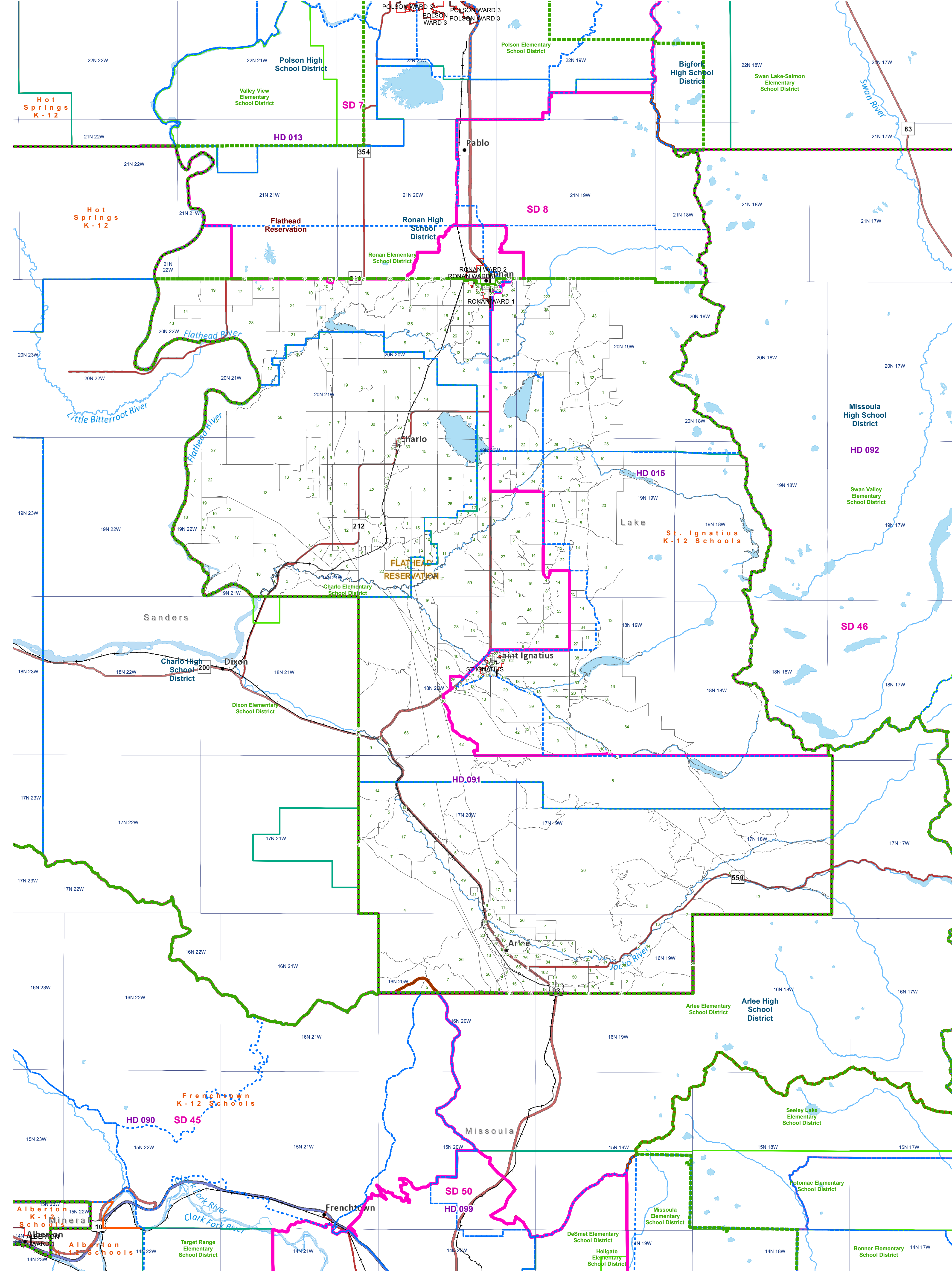
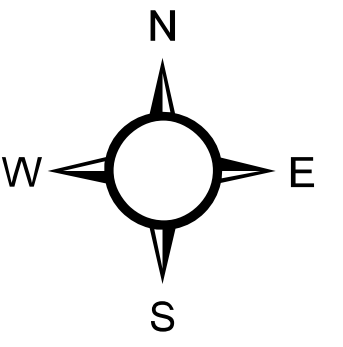


# Lake - District #2

## County Commissioner Districts with 2020 Census Blocks

Total Population: 9,728



Voting Precincts  
 Montana State Library  
 Created on 3/9/2023  
 Meghan Burns | [GeoEnabledElections@mt.gov](mailto:GeoEnabledElections@mt.gov)  
<https://geoenabled-elections-montana.hub.arcgis.com/>